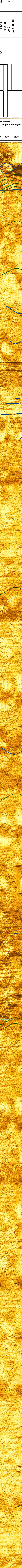
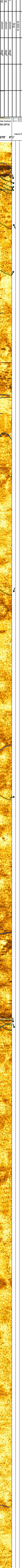
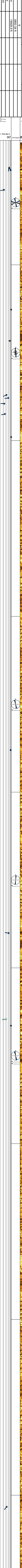
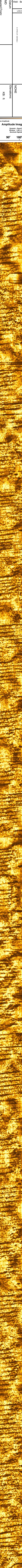
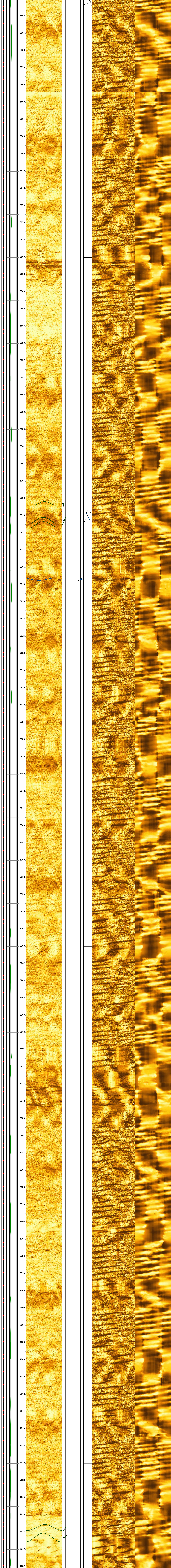


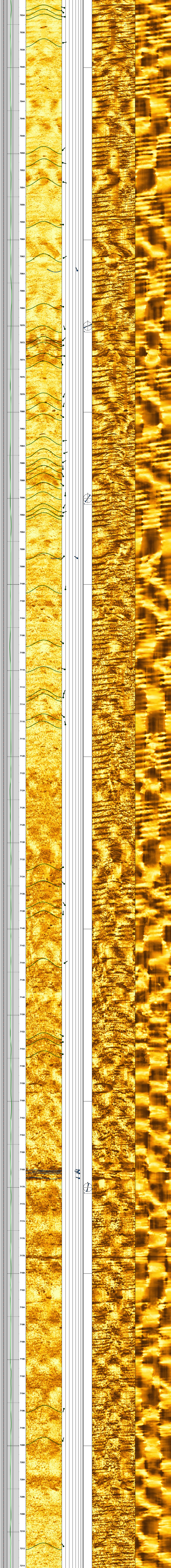
Country	USA	Operator	NNE
Well:	Boggeess-9H	Permanent Datum	
TD Driller	- MD	Drilling Measured From:	
LOCATION		Other Services:	
Field	Boggeess-9H	NONE	
Block	Operator	Elevations:	
Country	USA	KB: ft	

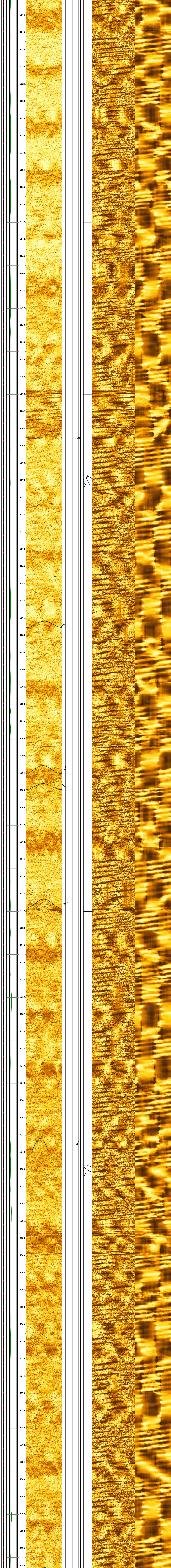
TD	
Top Log Int	5850.34 ft
Base Log Int	19928.9 ft
Top Picc Int	
Base Picc Int	
Bit Size	8.500 in
MUD VTI	10/g
RMF & Temp	ohmm
RMC & Temp	ohmm
DLT Stable	100.00 us/f
RHOB Shale	2.40 g/cc
PHIN Shale	30.00 pu
GR Sh Matrix	GAPI
BHHT	dgf
BHHTA Stability	ppm
Rv & Temp	ohmm
M and N	2.00
Analysis Loc	2.00



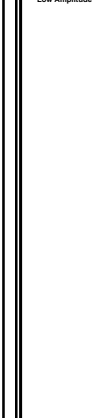
Analysis Loc	2.00
M and N	2.00
Rv & Temp	ohmm
BHHTA Stability	ppm
BHHT	dgf
GR Sh Matrix	GAPI
PHIN Shale	30.00 pu
RHOB Shale	2.40 g/cc
DLT Stable	100.00 us/f
RMC & Temp	ohmm
RMF & Temp	ohmm
MUD VTI	10/g
Bit Size	8.500 in
Base Picc Int	
Top Picc Int	
Base Log Int	19928.9 ft
Top Log Int	5850.34 ft
TD	

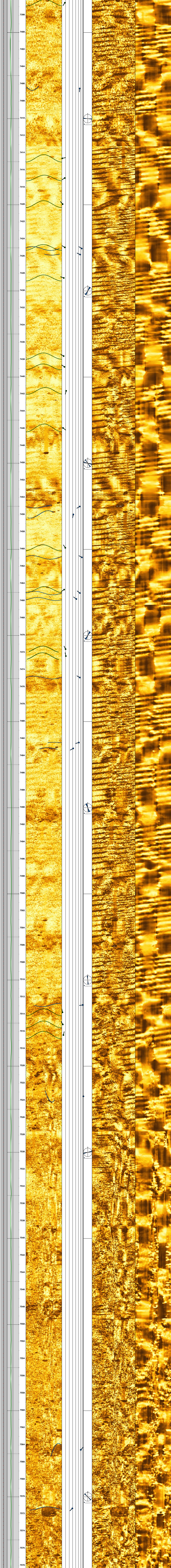


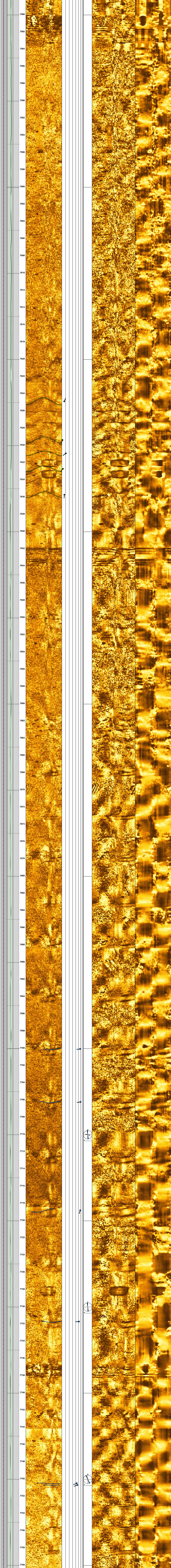


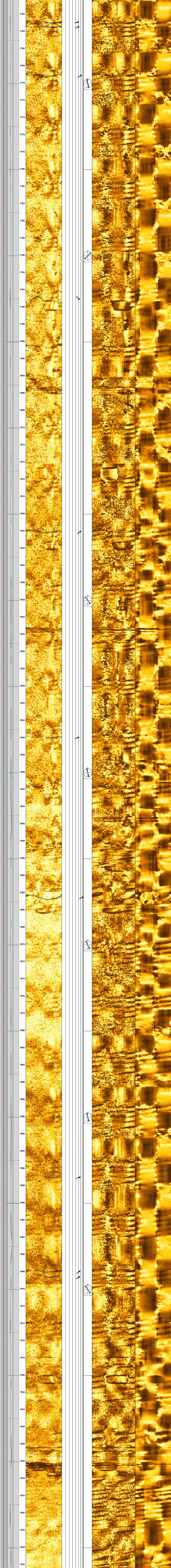


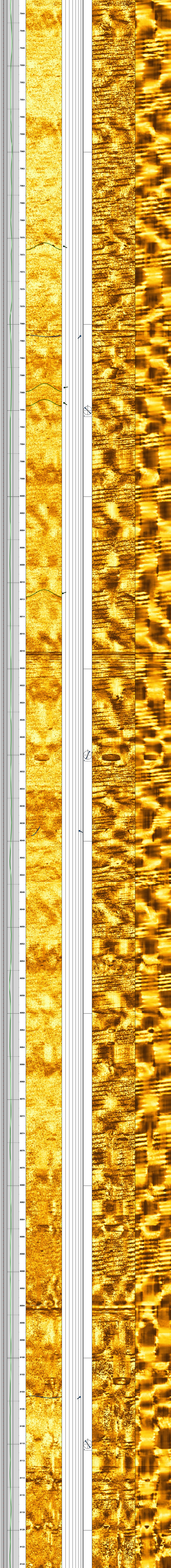
7216
7218
7220
7222
7224
7226
7228
7230
7232
7234
7236
7238
7240
7242
7244
7246
7248
7250
7252
7254
7256
7258
7260
7262
7264
7266
7268
7270
7272
7274
7276
7278
7280
7282
7284
7286
7288
7290
7292
7294
7296
7298
7300
7302
7304
7306
7308
7310
7312
7314
7316
7318
7320
7322
7324
7326
7328
7330
7332
7334
7336
7338
7340
7342
7344
7346
7348
7350
7352
7354
7356
7358
7360
7362
7364
7366
7368
7370
7372
7374
7376
7378
7380
7382
7384
7386
7388
7390
7392
7394
7396

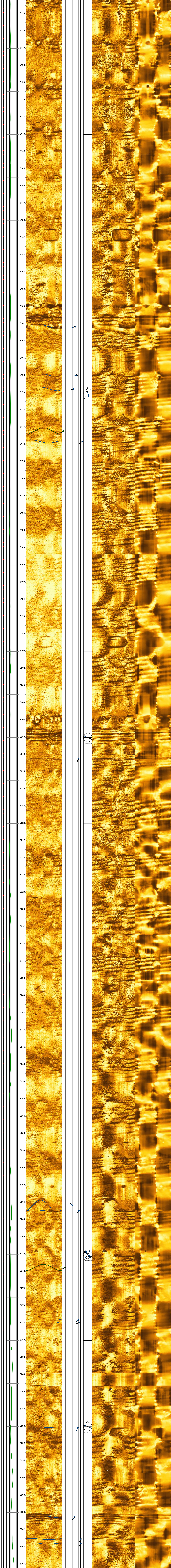


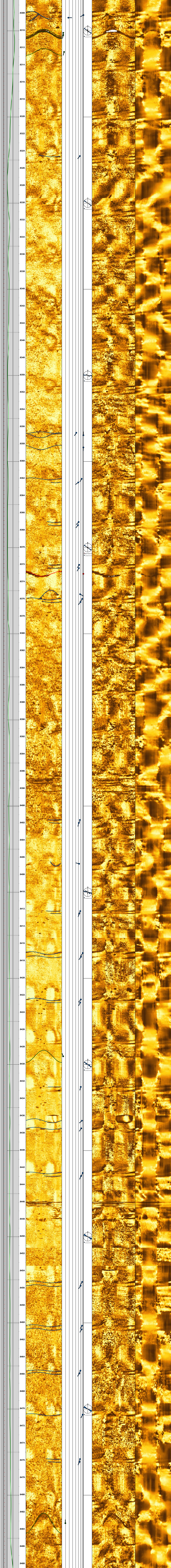


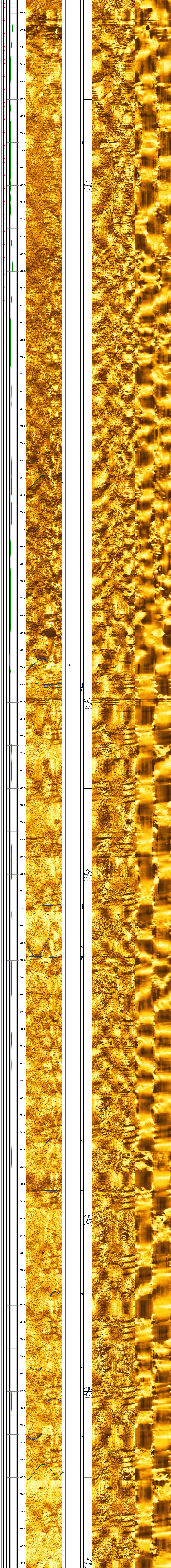


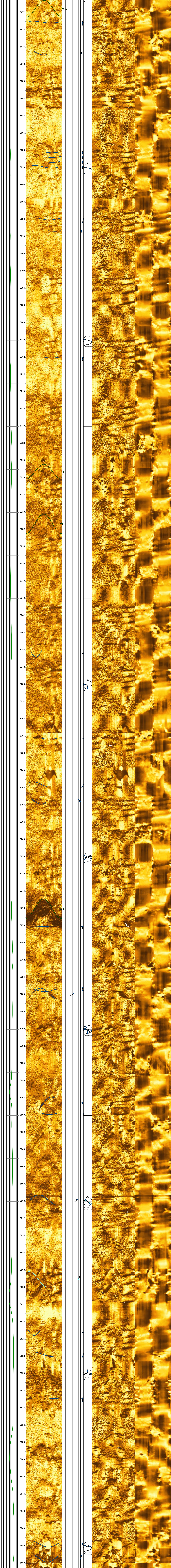


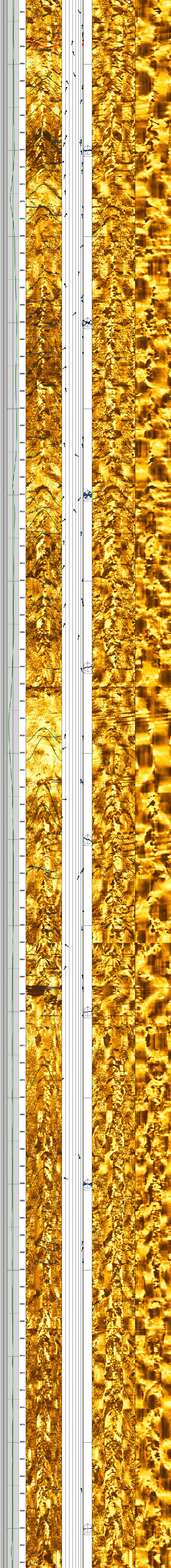


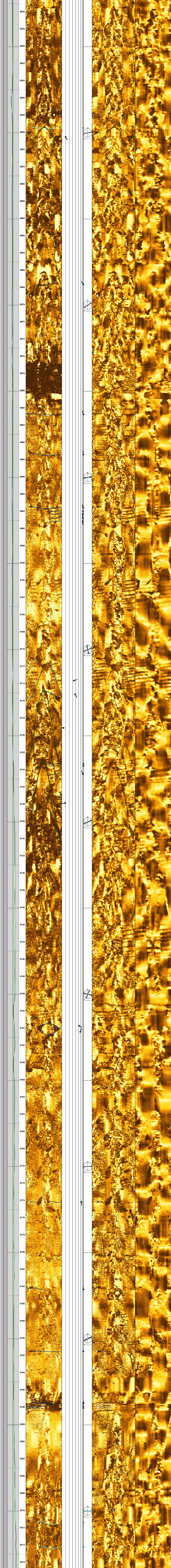


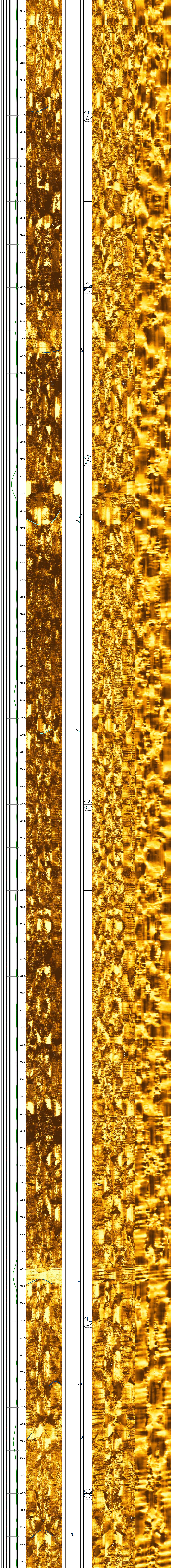


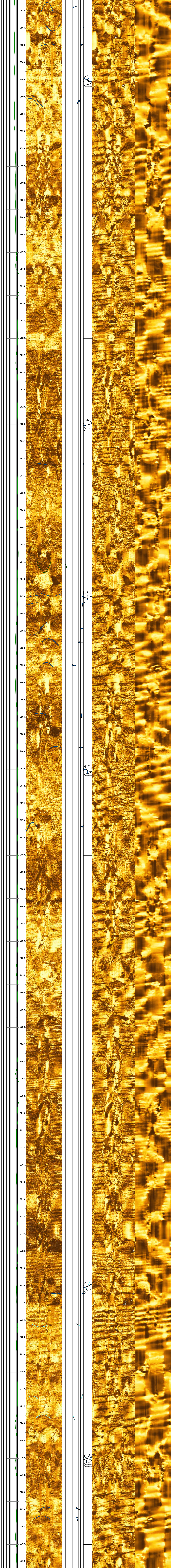


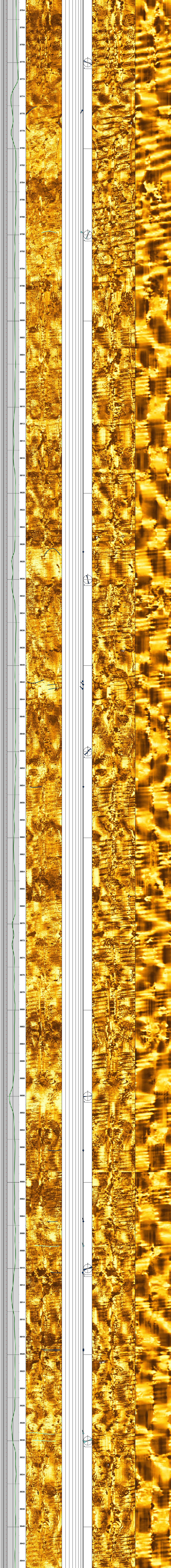


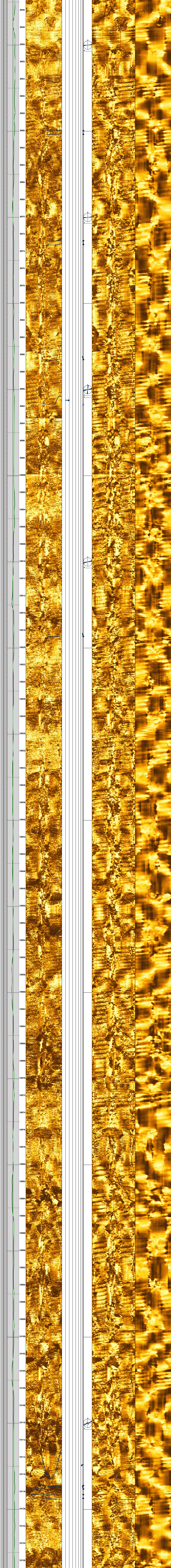


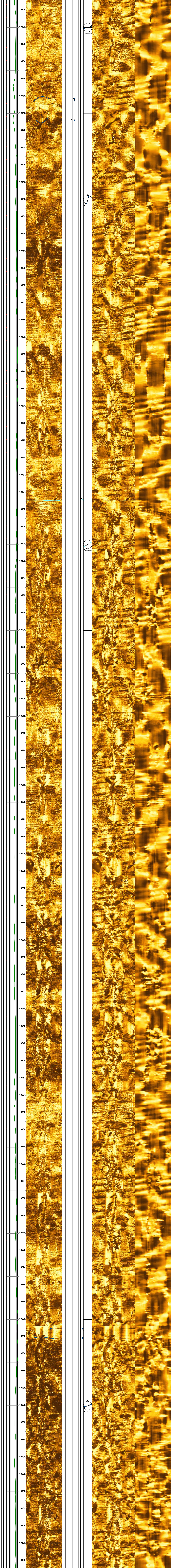


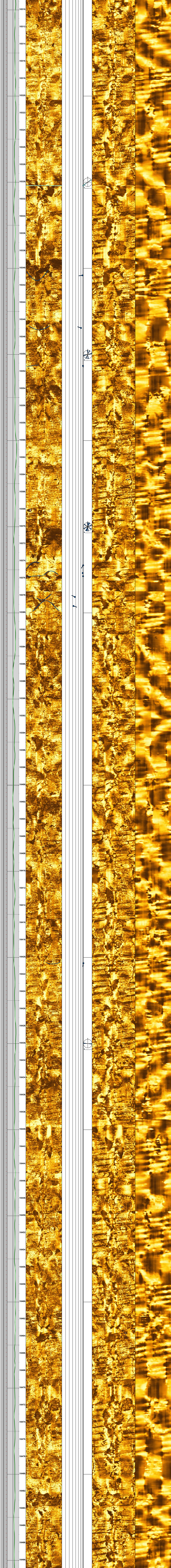


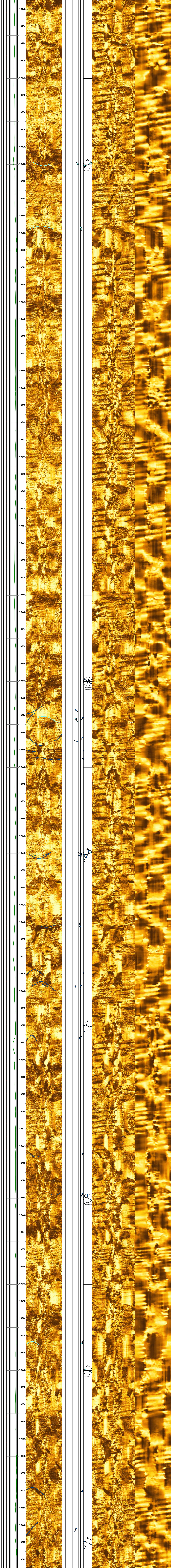


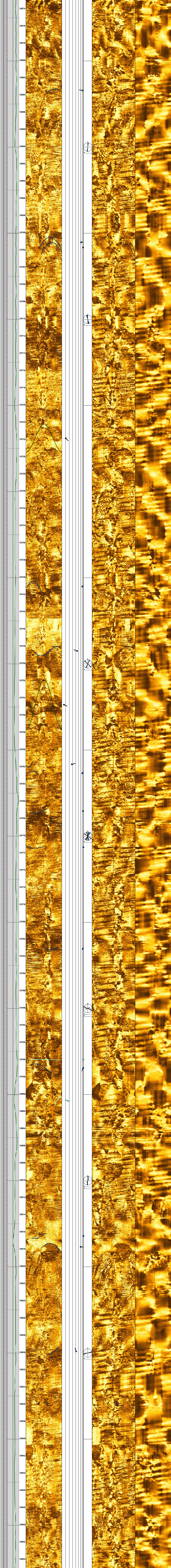


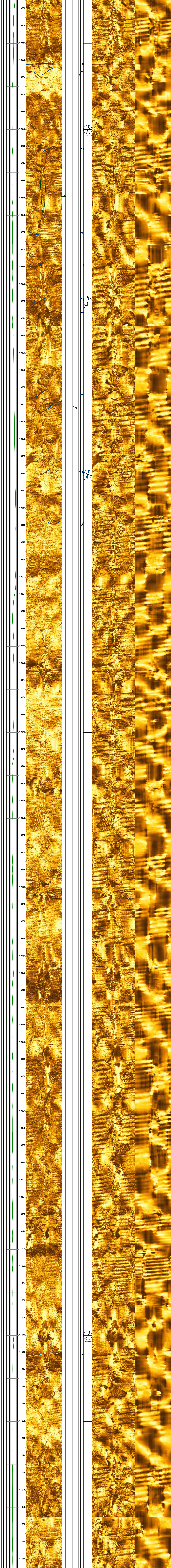


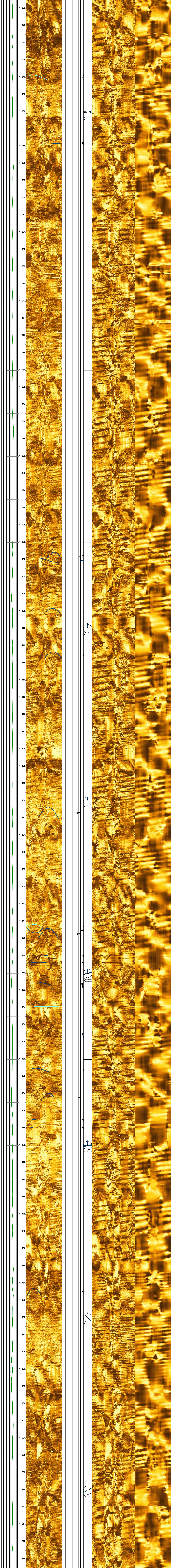


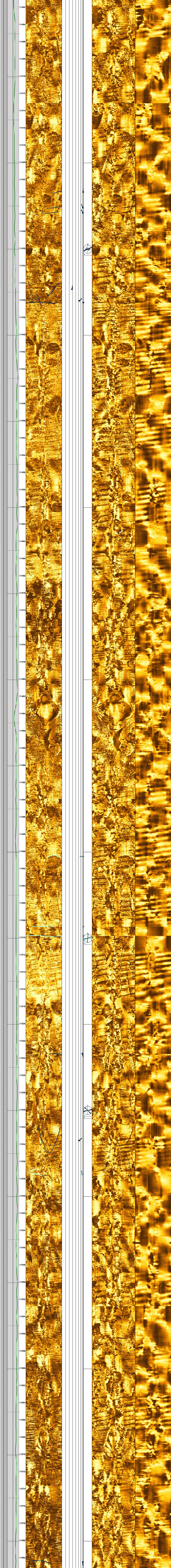












11402

11404

11406

11408

11410

11412

11414

11416

11418

11420

11422

11424

11426

11428

11430

11432

11434

11436

11438

11440

11442

11444

11446

11448

11450

11452

11454

11456

11458

11460

11462

11464

11466

11468

11470

11472

11474

11476

11478

11480

11482

11484

11486

11488

11490

11492

11494

11496

11498

11500

11502

11504

11506

11508

11510

11512

11514

11516

11518

11520

11522

11524

11526

11528

11530

11532

11534

11536

11538

11540

11542

11544

11546

11548

11550

11552

11554

11556

11558

11560

11562

11564

11566

11568

11570

11572

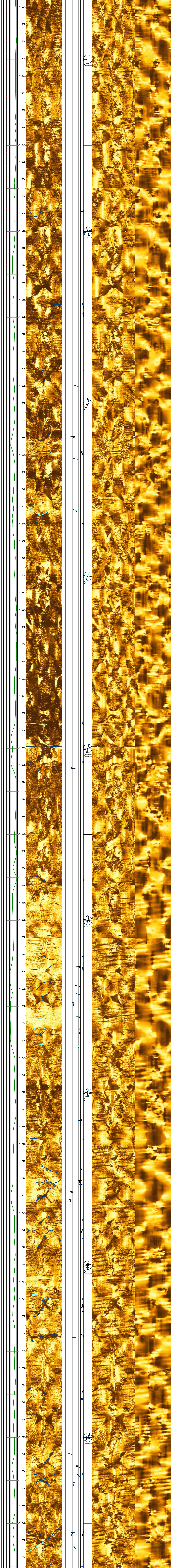
11574

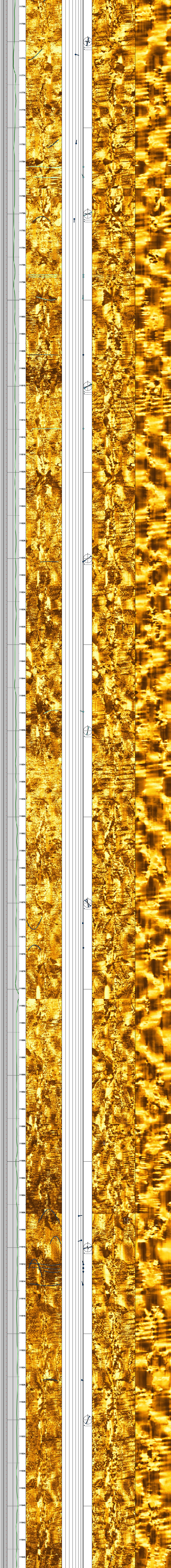
11576

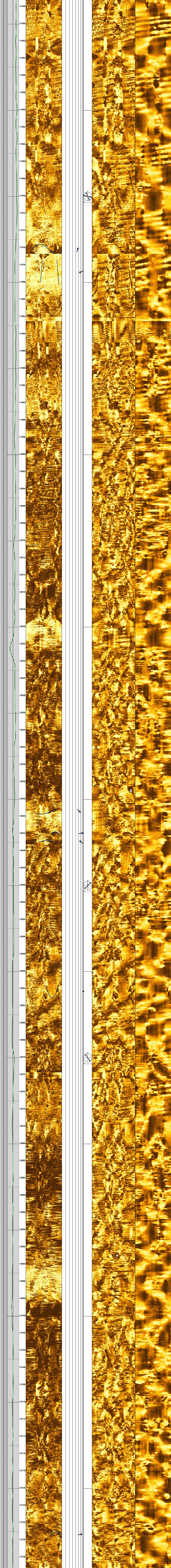
11578

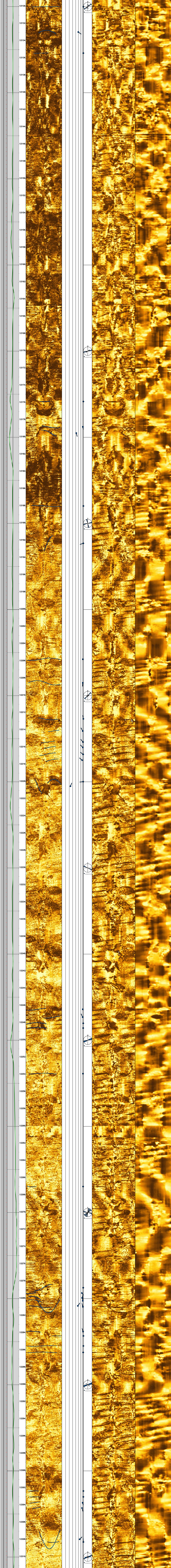
11580

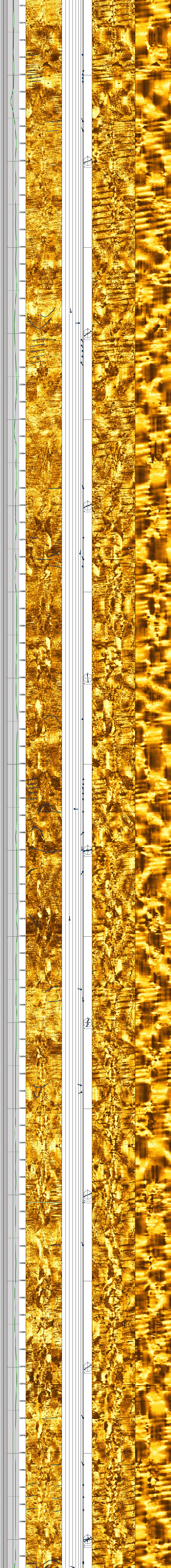
11582

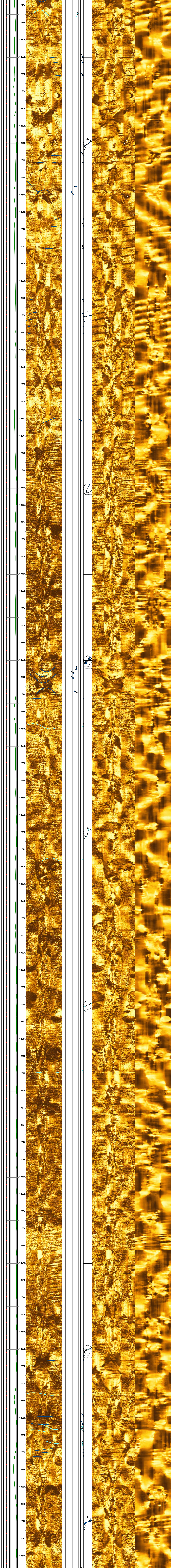


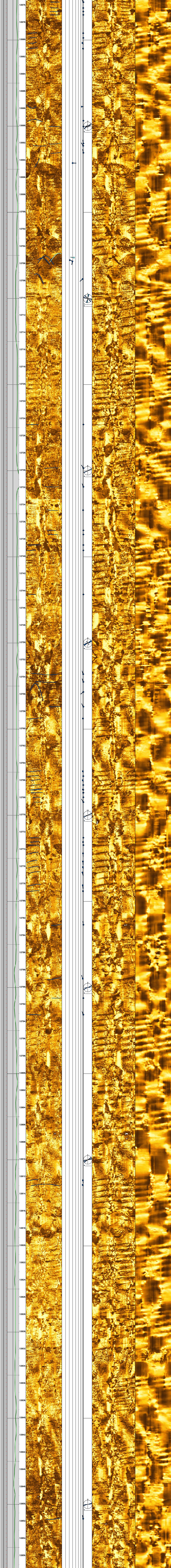


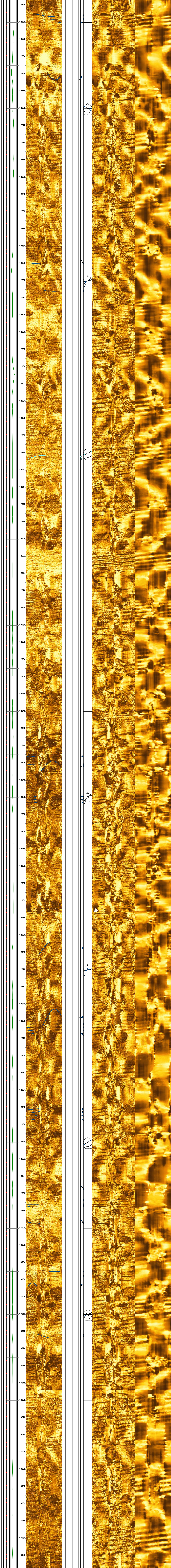


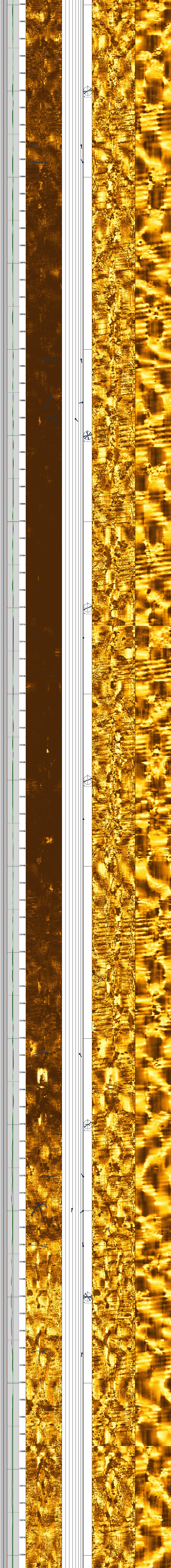


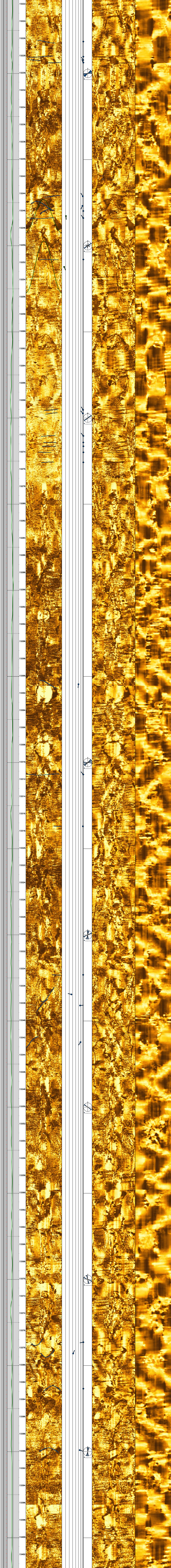


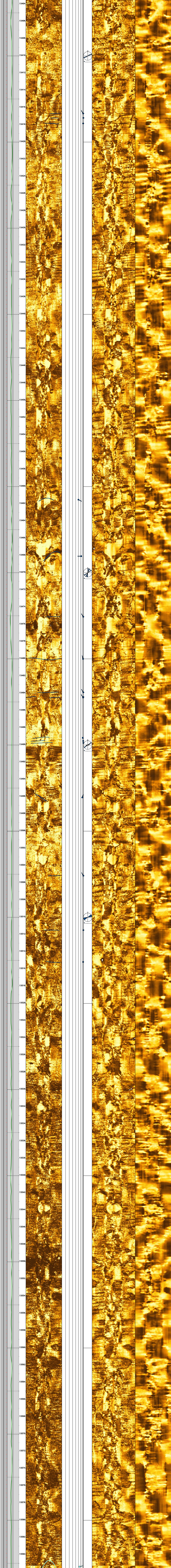


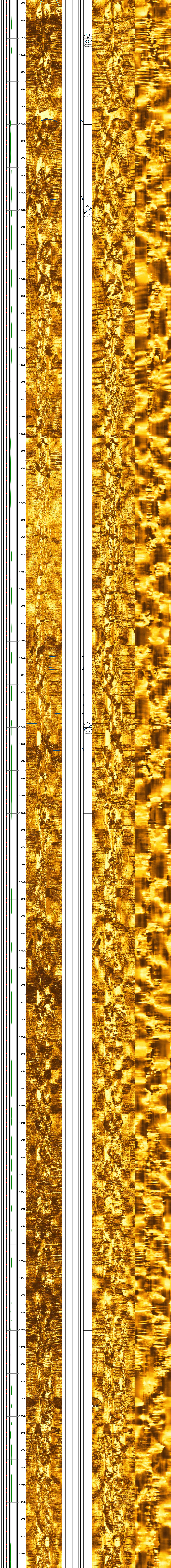


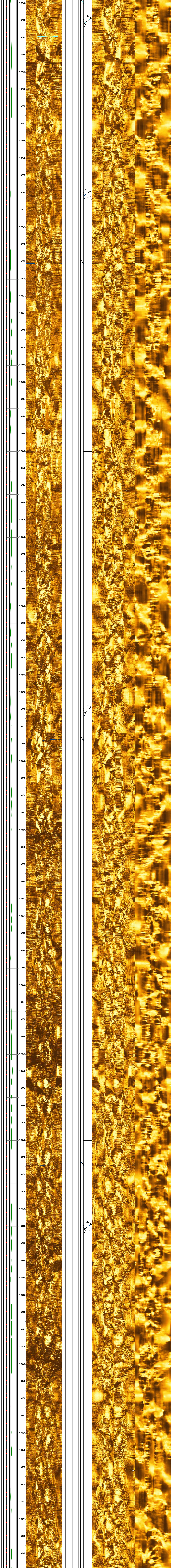


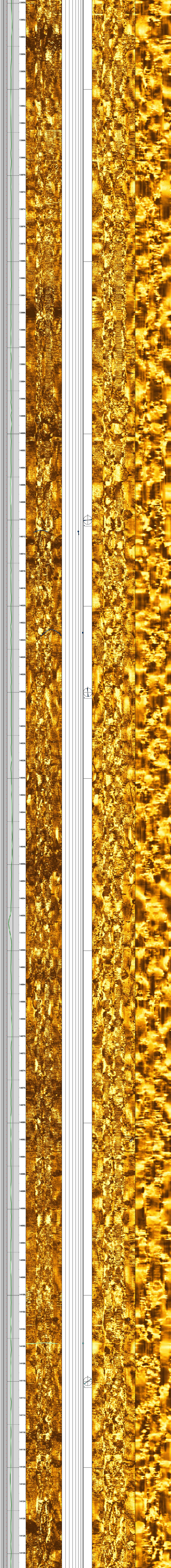


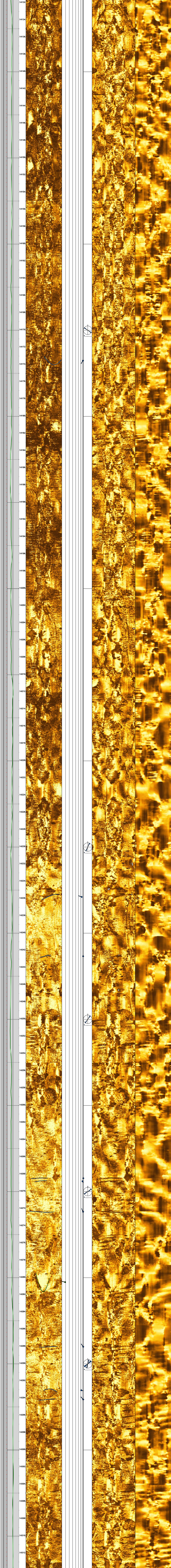


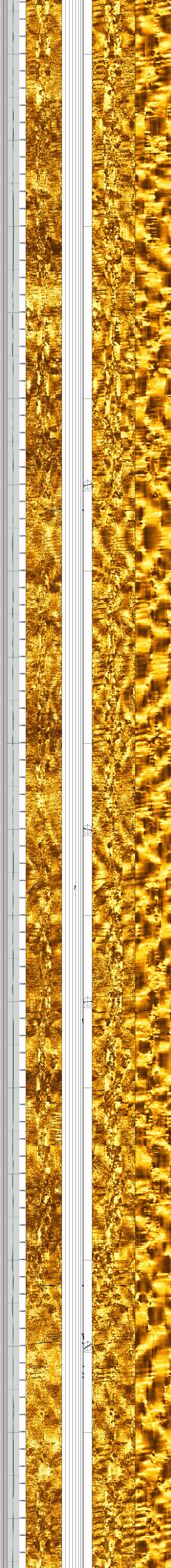


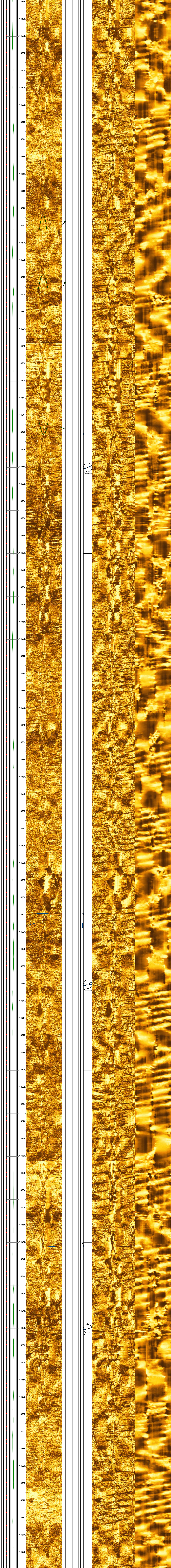


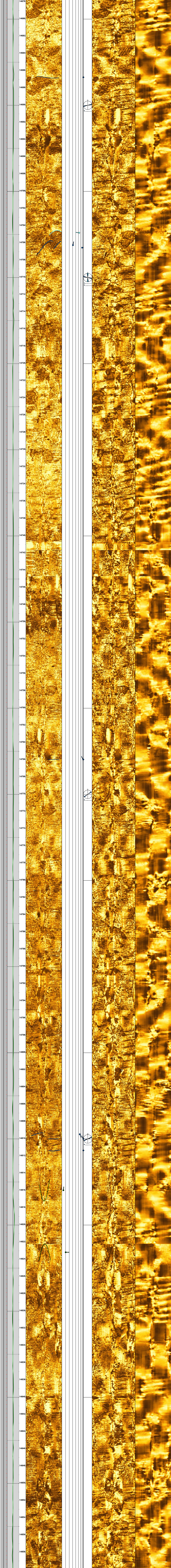


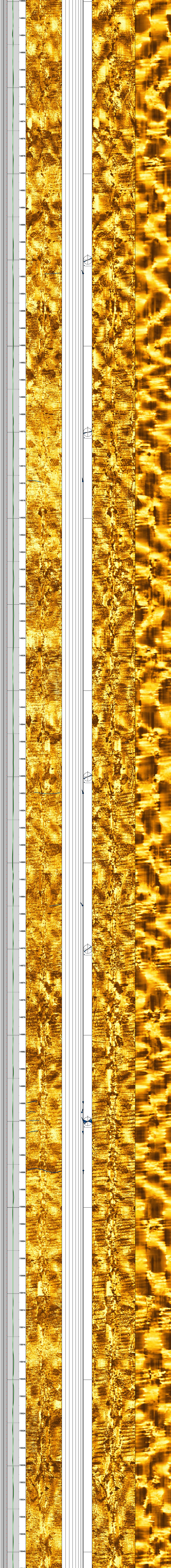


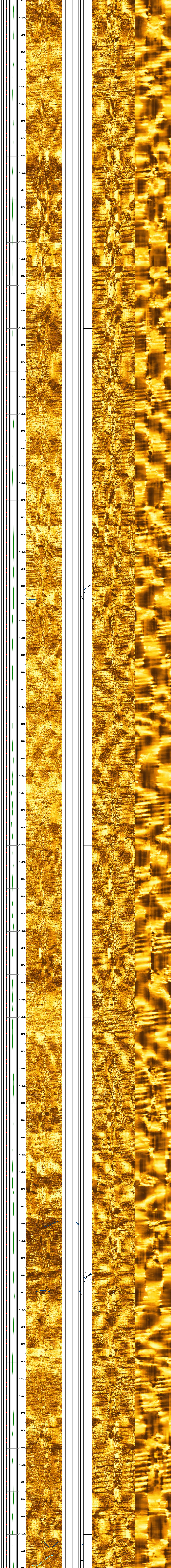


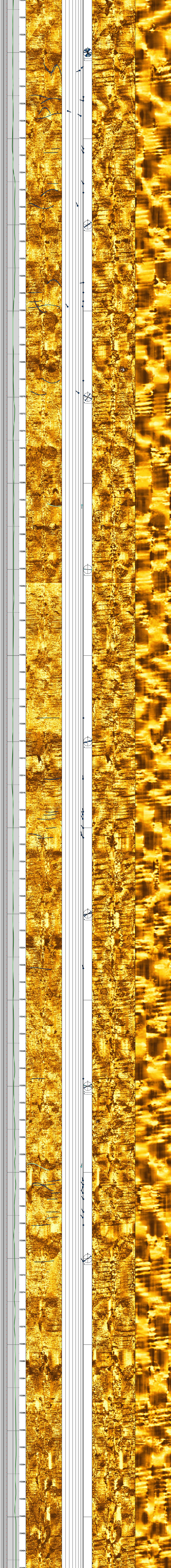


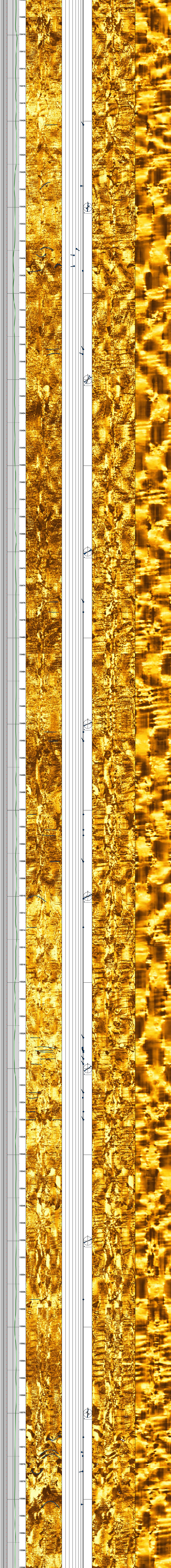


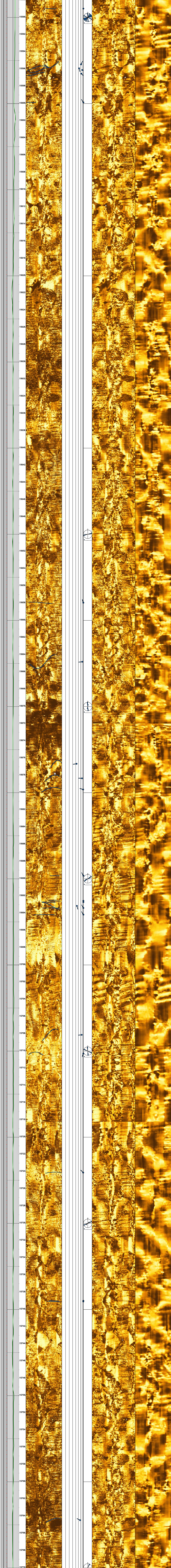


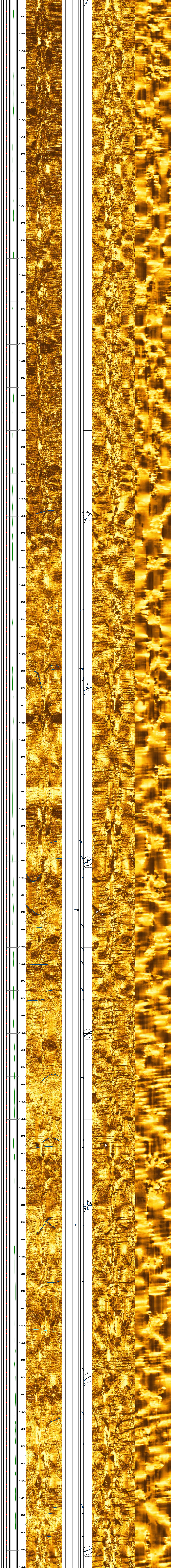












15772
15774
15776
15778
15780
15782
15784
15786
15788
15790
15792
15794
15796
15798
15800
15802
15804
15806
15808
15810
15812
15814
15816
15818
15820
15822
15824
15826
15828
15830
15832
15834
15836
15838
15840
15842
15844
15846
15848
15850
15852
15854
15856
15858
15860
15862
15864
15866
15868
15870
15872
15874
15876
15878
15880
15882
15884
15886
15888
15890
15892
15894
15896
15898
15900
15902
15904
15906
15908
15910
15912
15914
15916
15918
15920
15922
15924
15926
15928
15930
15932
15934
15936
15938
15940
15942
15944
15946
15948
15950
15952

