

Client:	Northeast Natural Energy LLC
Well:	Bogges 17H
API/UWI:	4706101812
Data Analysis Type:	Rock-Eval VI (Whole Core as-received)
Project No.:	2020USHO-P031
Date:	27-May-20
Final:	Yes

Prepared by:

Schlumberger

Schlumberger Reservoir Laboratories
6350 West Sam Houston Parkway North
Houston, Texas 77041
(713) 482-0700



Disclaimer

The following disclaimer applies to this report and any interpretation provided by any of the Laboratories that comprise the Schlumberger Reservoir Laboratories:

Any interpretation, research, analysis, or recommendation furnished with the services or otherwise communicated by Schlumberger Reservoir Laboratories to Customer at any time in connection with the services are opinions based on inferences from measurements and empirical relationships and assumptions, which inferences and assumptions are not infallible, and with respect to which professionals in the industry may differ. Accordingly, Schlumberger Reservoir Laboratories cannot and does not warrant the accuracy, correctness or completeness of any such interpretation or description.

Customer acknowledges that It is accepting the services “as is”, that Schlumberger Reservoir Laboratories makes no representation or warranty, express or implied, of any kind or description in respect thereto, and that such services are delivered with the explicit understanding and agreement that any action customer may take based on the services received shall be at its own risk and responsibility and customer shall have no claim against Schlumberger Reservoir Laboratories as a consequence thereof.

Customer confirms that Schlumberger Reservoir Laboratories has made no promise or statement regarding the services that is inconsistent with these terms, or that has created or amounted to a warranty that the services would conform to any such promise or statement, and Schlumberger Reservoir Laboratories disclaims any and all warranties regarding the same.

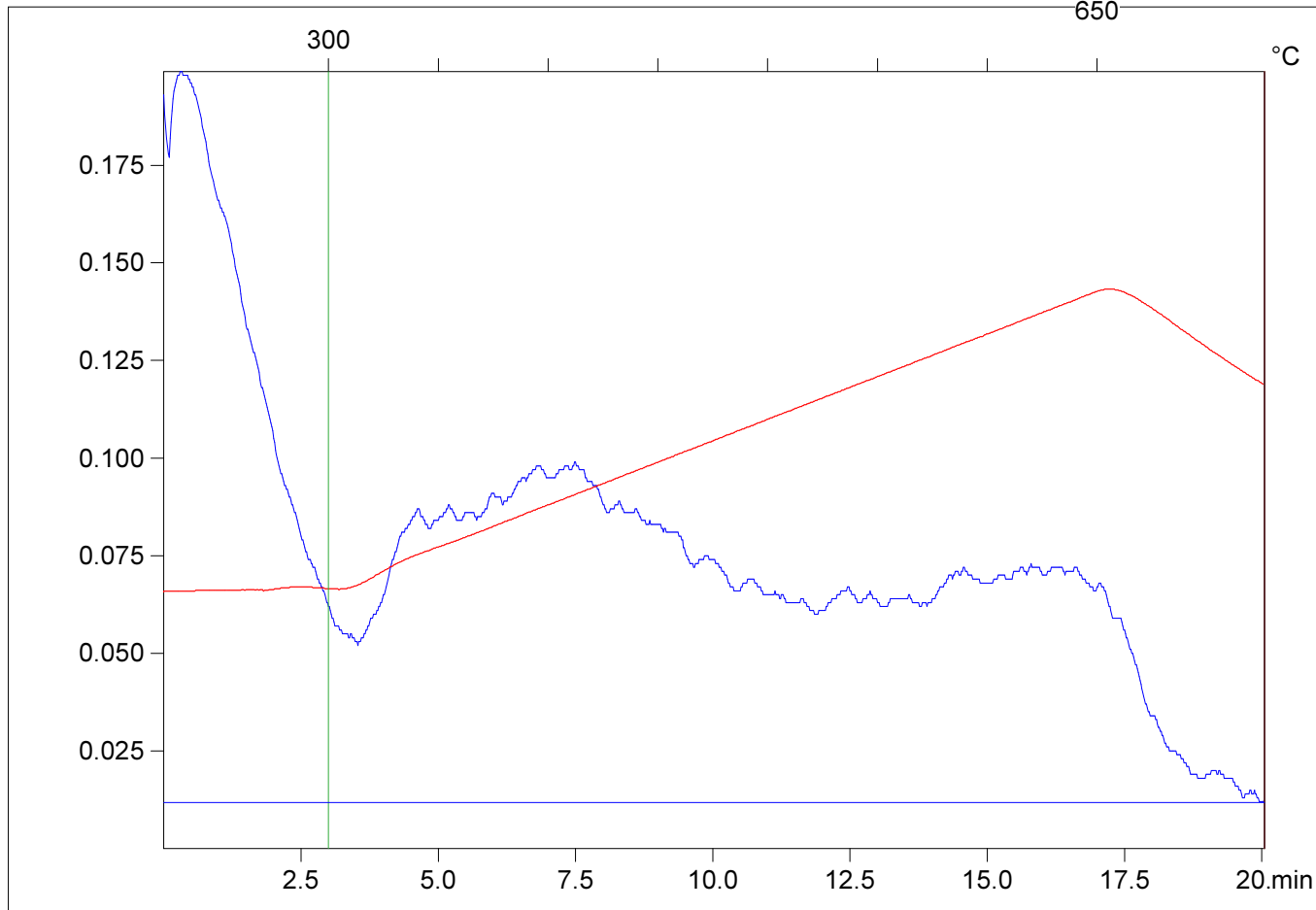
Customer :

Northeast Natural Energy LLC

Customer part :

Boggess 17H

Comment :



S1(mg/g)=0.05

S2(mg/g)=0.12

Tmax(°C)=367

TpkS2(°C)=410.0

PI=0.28

HI=4

Sample =wc1

Method =Bulk Rock

Cycle=Basic

KFID(10*9)=1302

Qty(mg)=61.1

TOC(%)=2.85

C:\SLB2020\2020USHO-P031\WC1.R00 : FID pyrolysis graphic

State

Pyro Status

Oxi Status

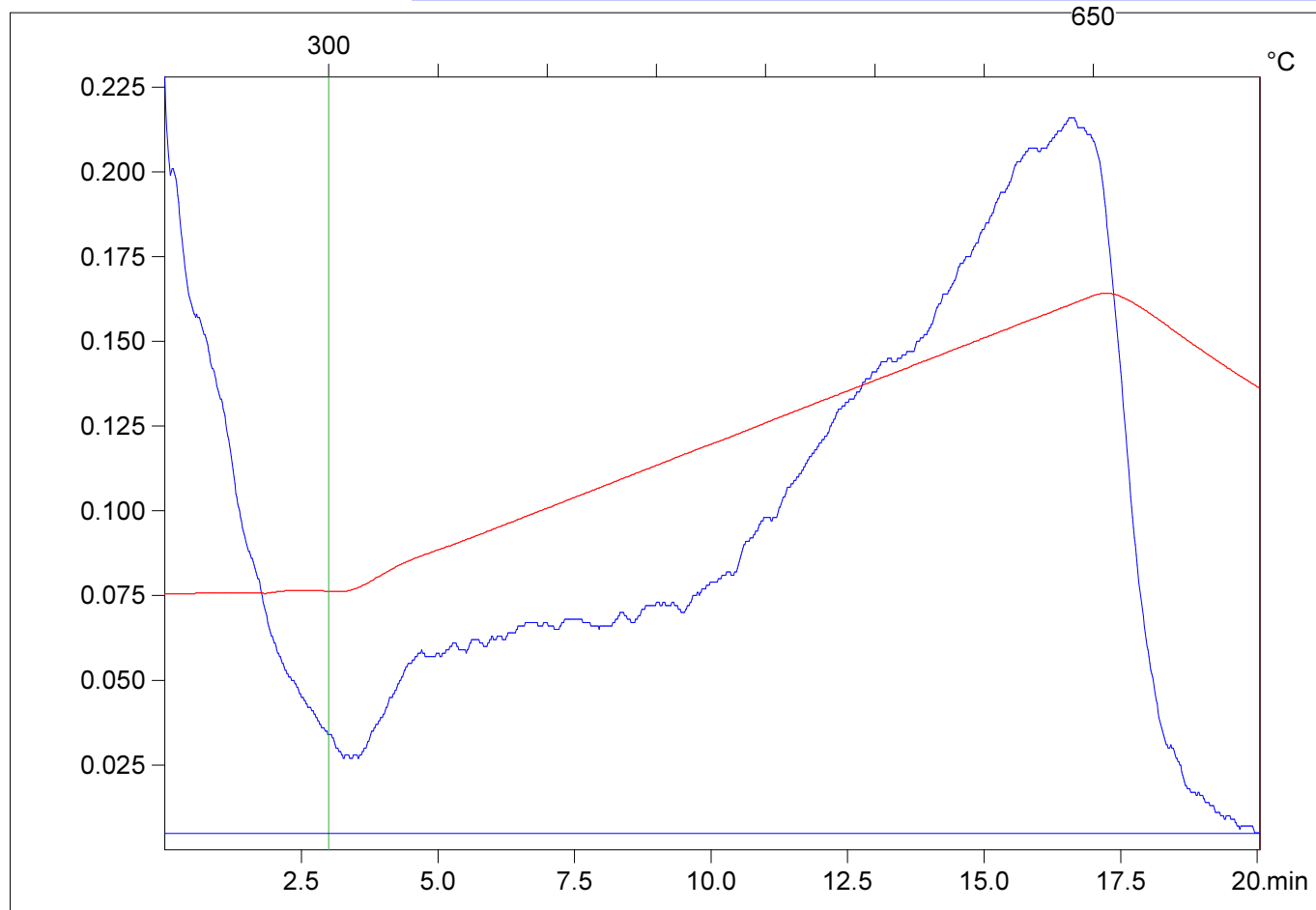
Customer :

Northeast Natural Energy LLC

Customer part :

Boggess 17H

Comment :



S1(mg/g)=0.04

S2(mg/g)=0.23

Tmax(°C)=591

TpkS2(°C)=634.0

PI=0.16

HI=5

Sample =wc2

Method =Bulk Rock

Cycle=Basic

KFID(10*9)=1302

Qty(mg)=54.1

TOC(%)=4.41

C:\SLB2020\2020USHO-P031\WC2.R00 : FID pyrolysis graphic

State

Pyro Status

Oxi Status

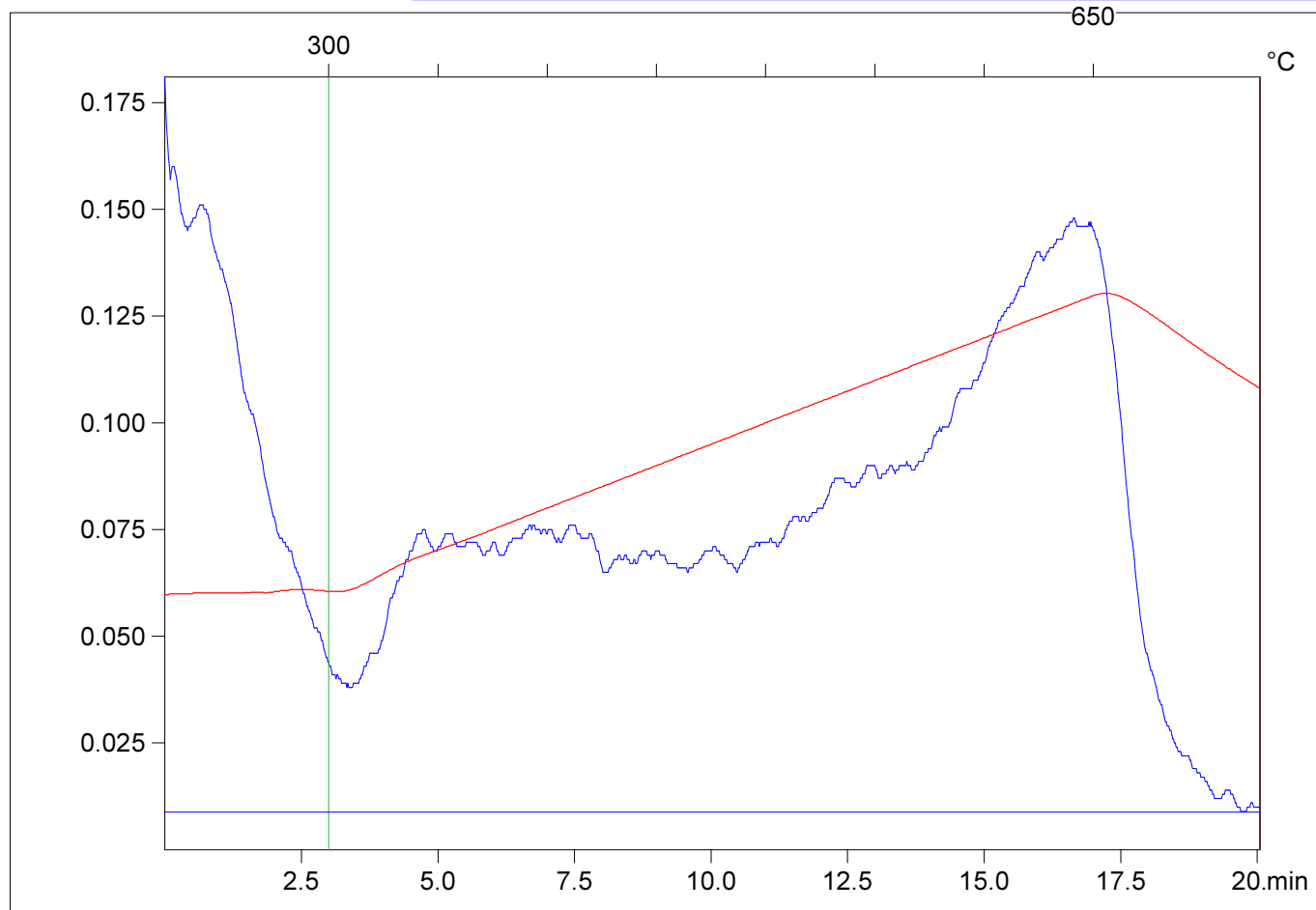
Customer :

Northeast Natural Energy LLC

Customer part :

Boggess 17H

Comment :



S1(mg/g)=0.04

S2(mg/g)=0.15

Tmax(°C)=593

TpkS2(°C)=636.0

PI=0.2

HI=5

Sample =wc3

Method =Bulk Rock

Cycle=Basic

KFID(10*9)=1302

Qty(mg)=59.7

TOC(%)=3.1

C:\SLB2020\2020USHO-P031\WC3.R00 : FID pyrolysis graphic

State

Pyro Status

Oxi Status

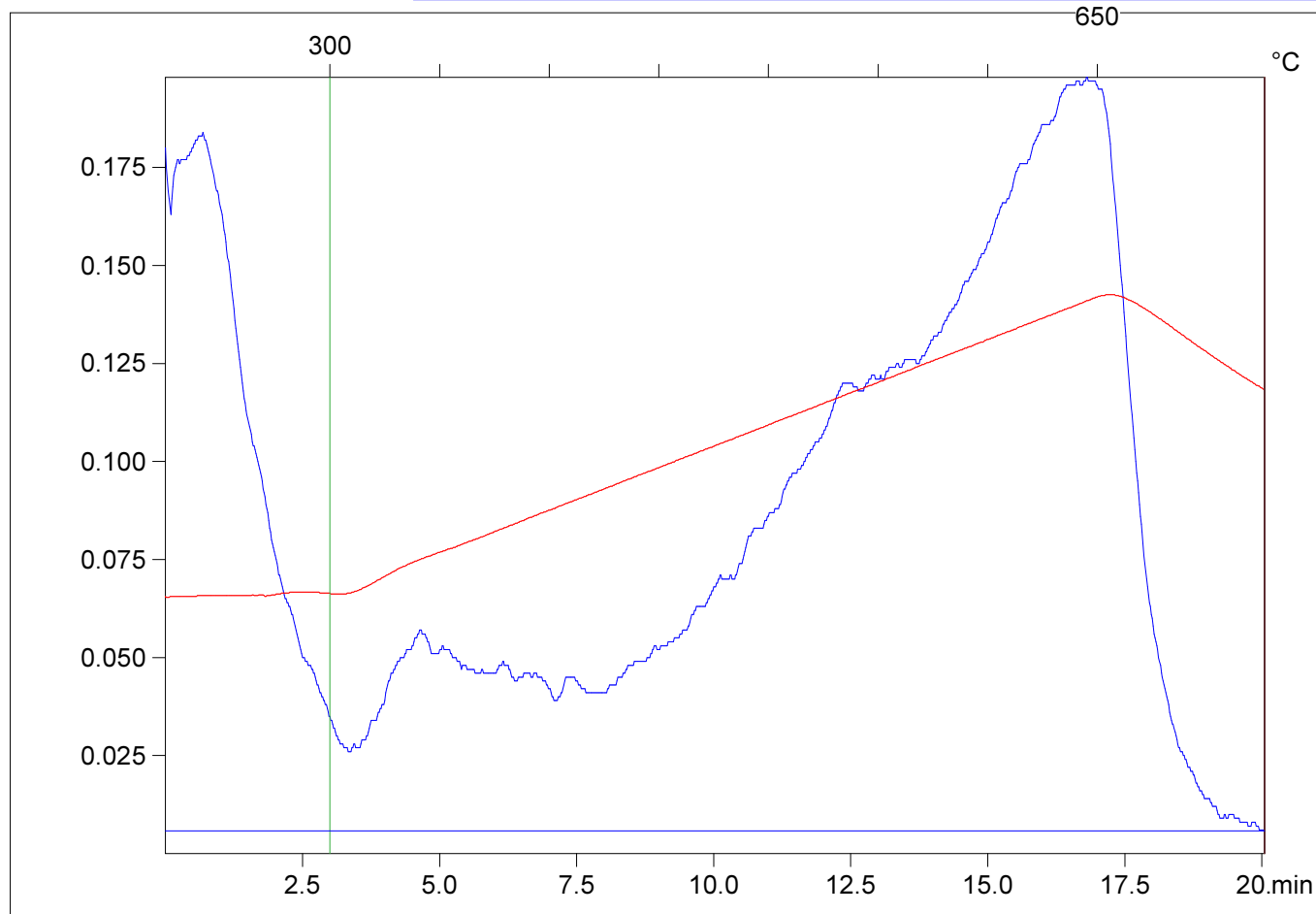
Customer :

Northeast Natural Energy LLC

Customer part :

Boggess 17H

Comment :



S1(mg/g)=0.04

S2(mg/g)=0.16

Tmax(°C)=598

TpkS2(°C)=641.0

PI=0.2

HI=5

Sample =wc4

Method =Bulk Rock

Cycle=Basic

KFID(10*9)=1302

Qty(mg)=65.9

TOC(%)=3.47

C:\SLB2020\2020USHO-P031\WC4.R00 : FID pyrolysis graphic

State Ok

Pyro Status No blank subtraction

Oxi Status No blank subtraction

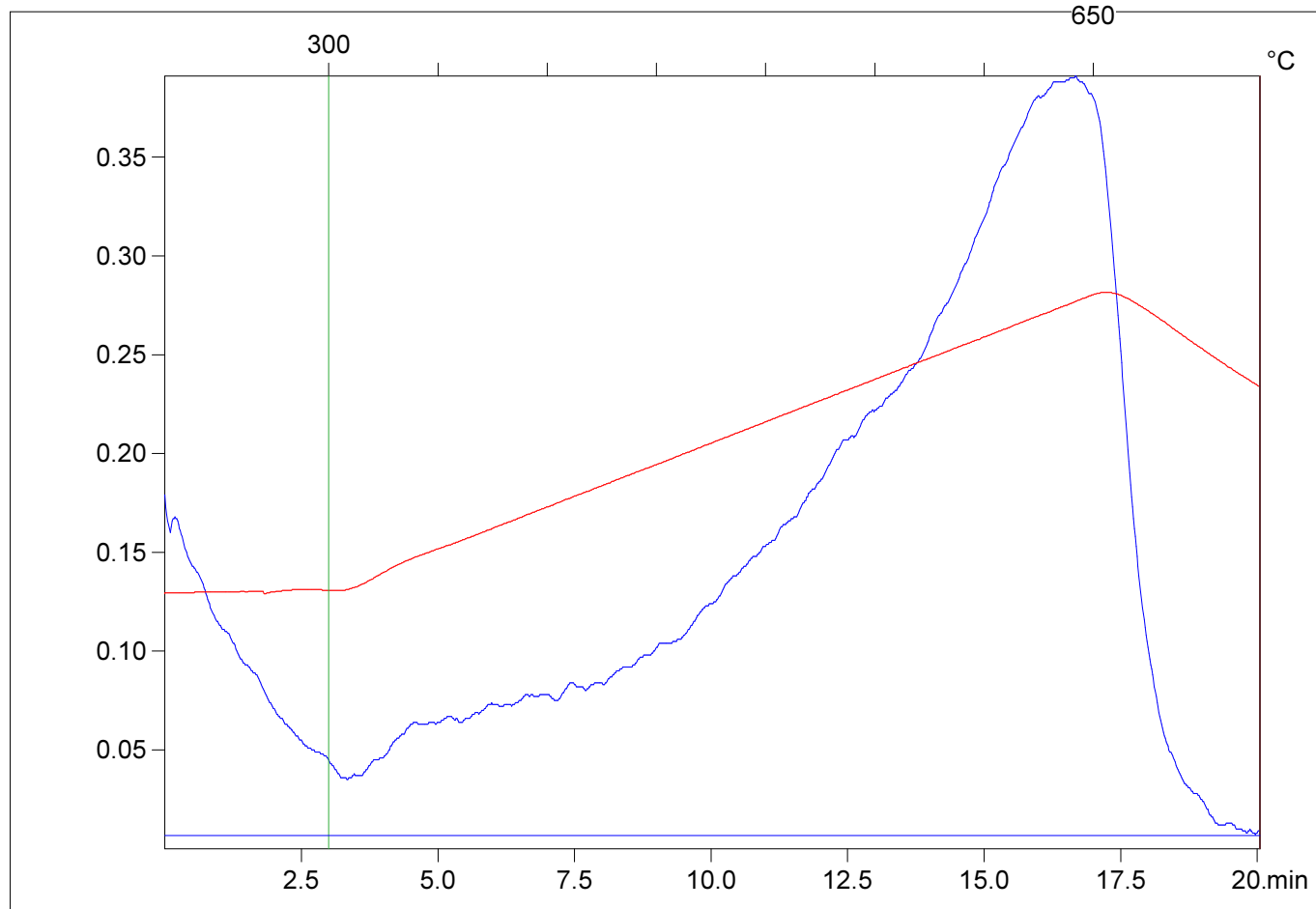
Customer :

Northeast Natural Energy LLC

Customer part :

Boggess 17H

Comment :



S1(mg/g)=0.03

S2(mg/g)=0.29

Tmax(°C)=594

TpkS2(°C)=637.0

PI=0.1

HI=5

Sample =wc5

Method =Bulk Rock

Cycle=Basic

KFID(10*9)=1302

Qty(mg)=67.3

TOC(%)=5.45

C:\SLB2020\2020USHO-P031\WC5.R00 : FID pyrolysis graphic

State

Pyro Status

Oxi Status

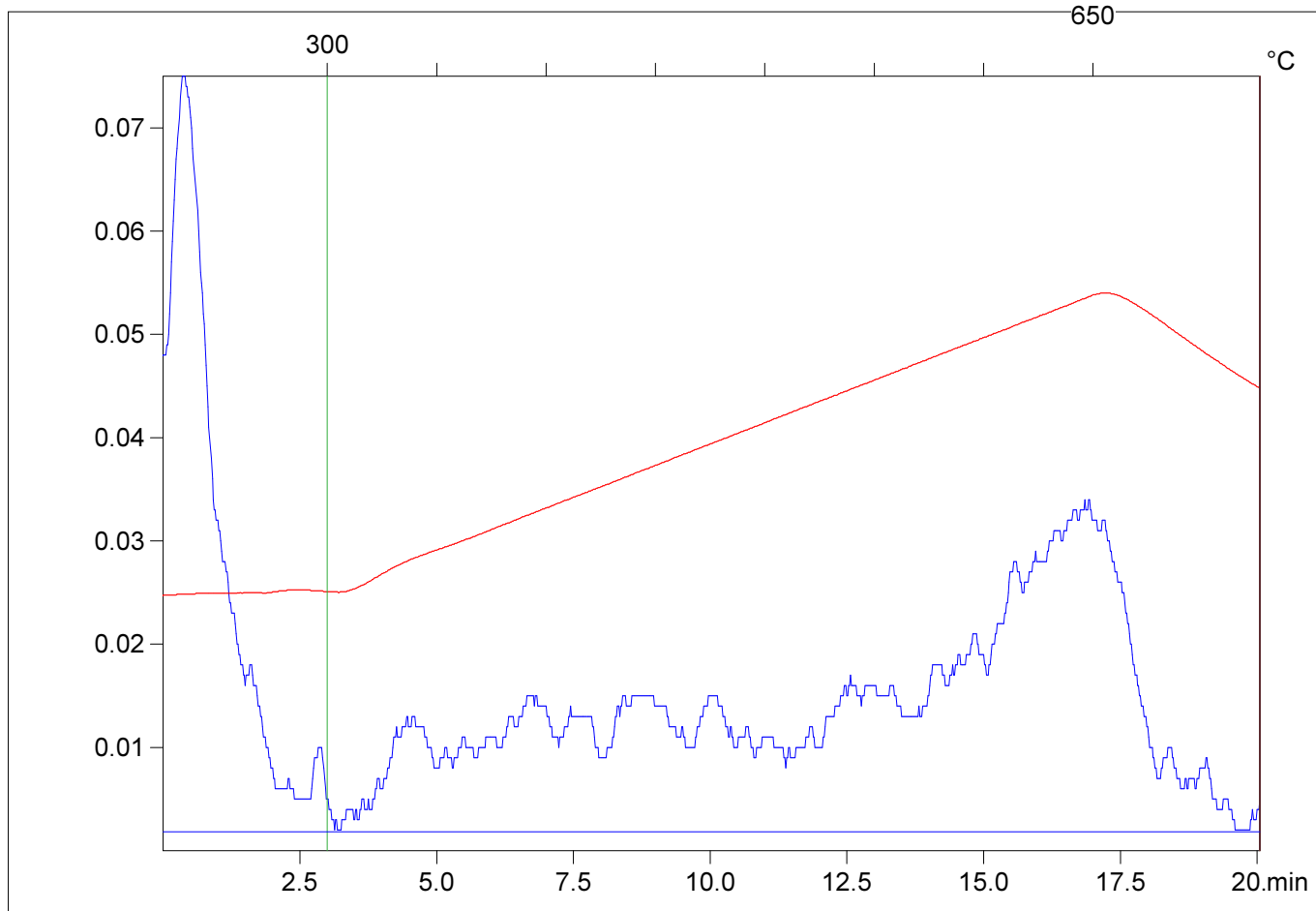
Customer :

Northeast Natural Energy LLC

Customer part :

Bogges 17H

Comment :



S1(mg/g)=0.01

S2(mg/g)=0.03

Tmax(°C)=600

TpkS2(°C)=642.0

PI=0.27

HI=9

Sample =wc6

Method =Bulk Rock

Cycle=Basic

KFID(10*9)=1342

Qty(mg)=57.0

TOC(%)=0.35

C:\SLB2020\2020USHO-P031\WC6.R00 : FID pyrolysis graphic

State

Pyro Status

Oxi Status

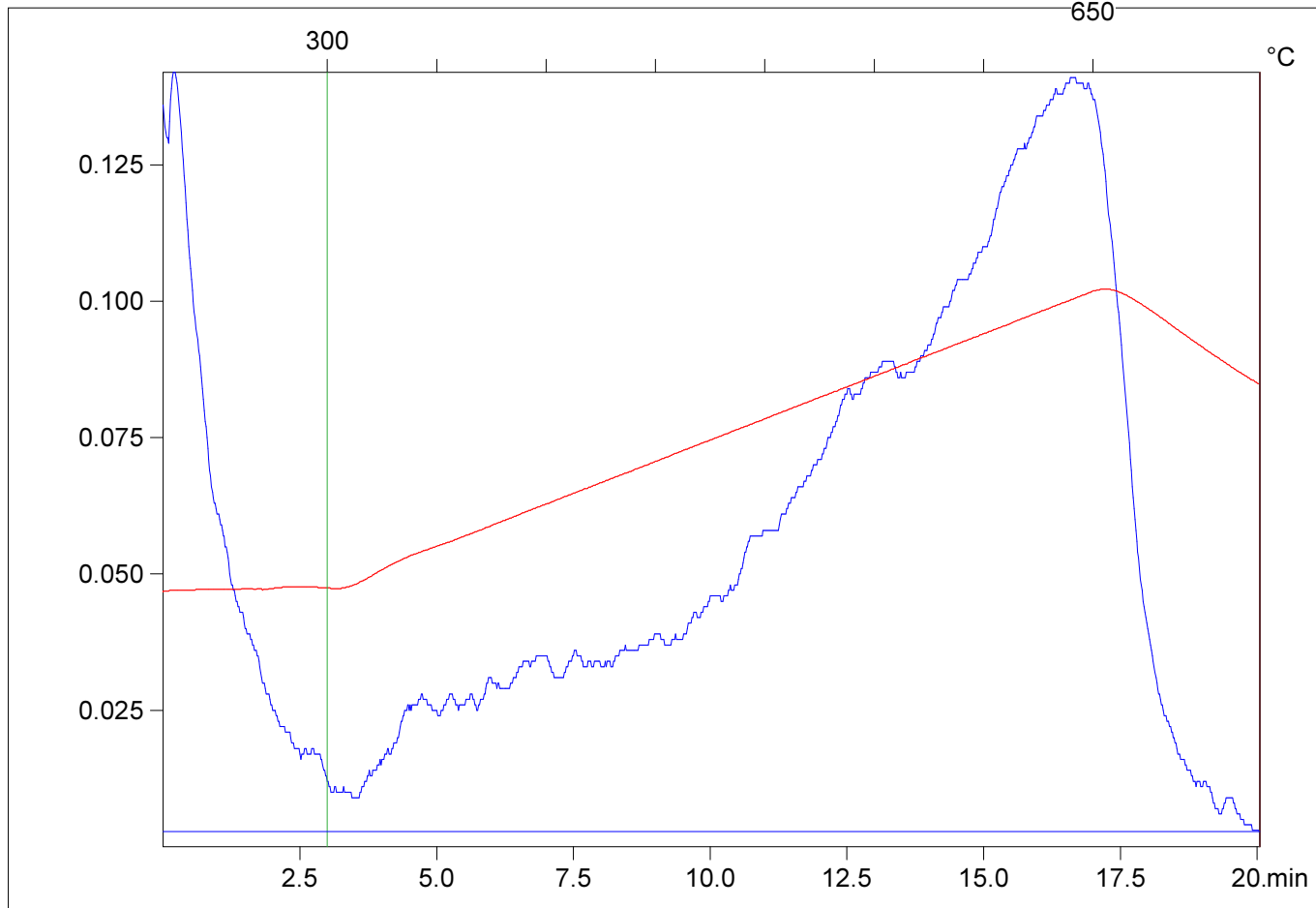
Customer :

Northeast Natural Energy LLC

Customer part :

Bogges 17H

Comment :



S1(mg/g)=0.02

S2(mg/g)=0.12

Tmax(°C)=593

TpkS2(°C)=635.0

PI=0.15

HI=5

Sample =wc7

Method =Bulk Rock

Cycle=Basic

KFID(10*9)=1342

Qty(mg)=59.6

TOC(%)=2.56

C:\SLB2020\2020USHO-P031\WC7.R00 : FID pyrolysis graphic

State

Pyro Status

Oxi Status

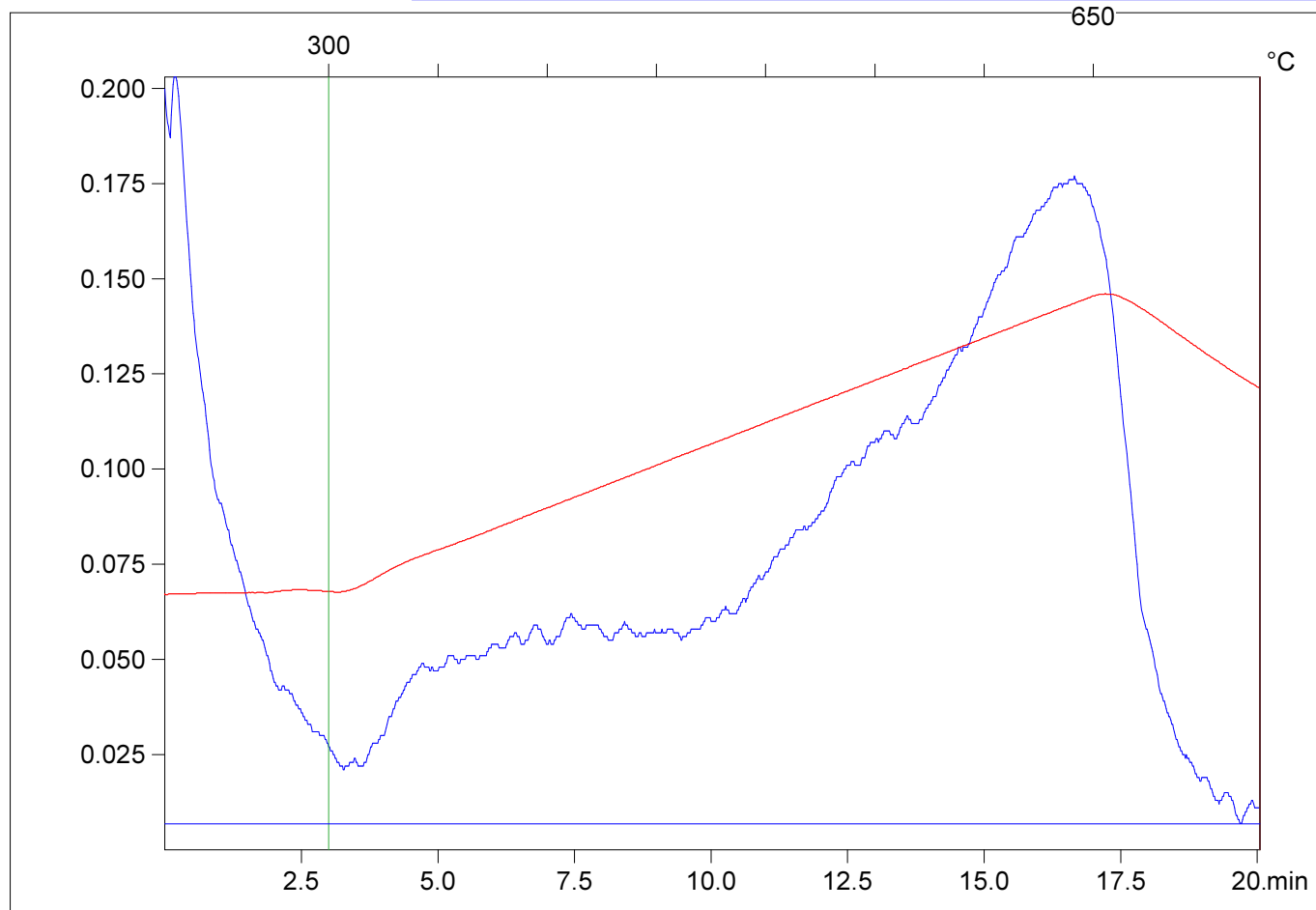
Customer :

Northeast Natural Energy LLC

Customer part :

Bogges 17H

Comment :



S1(mg/g)=0.03

S2(mg/g)=0.15

Tmax(°C)=594

TpkS2(°C)=636.0

PI=0.16

HI=5

Sample =wc8

Method =Bulk Rock

Cycle=Basic

KFID(10*9)=1342

Qty(mg)=66.5

TOC(%)=2.9

C:\SLB2020\2020USHO-P031\WC8.R00 : FID pyrolysis graphic

State

Pyro Status

Oxi Status

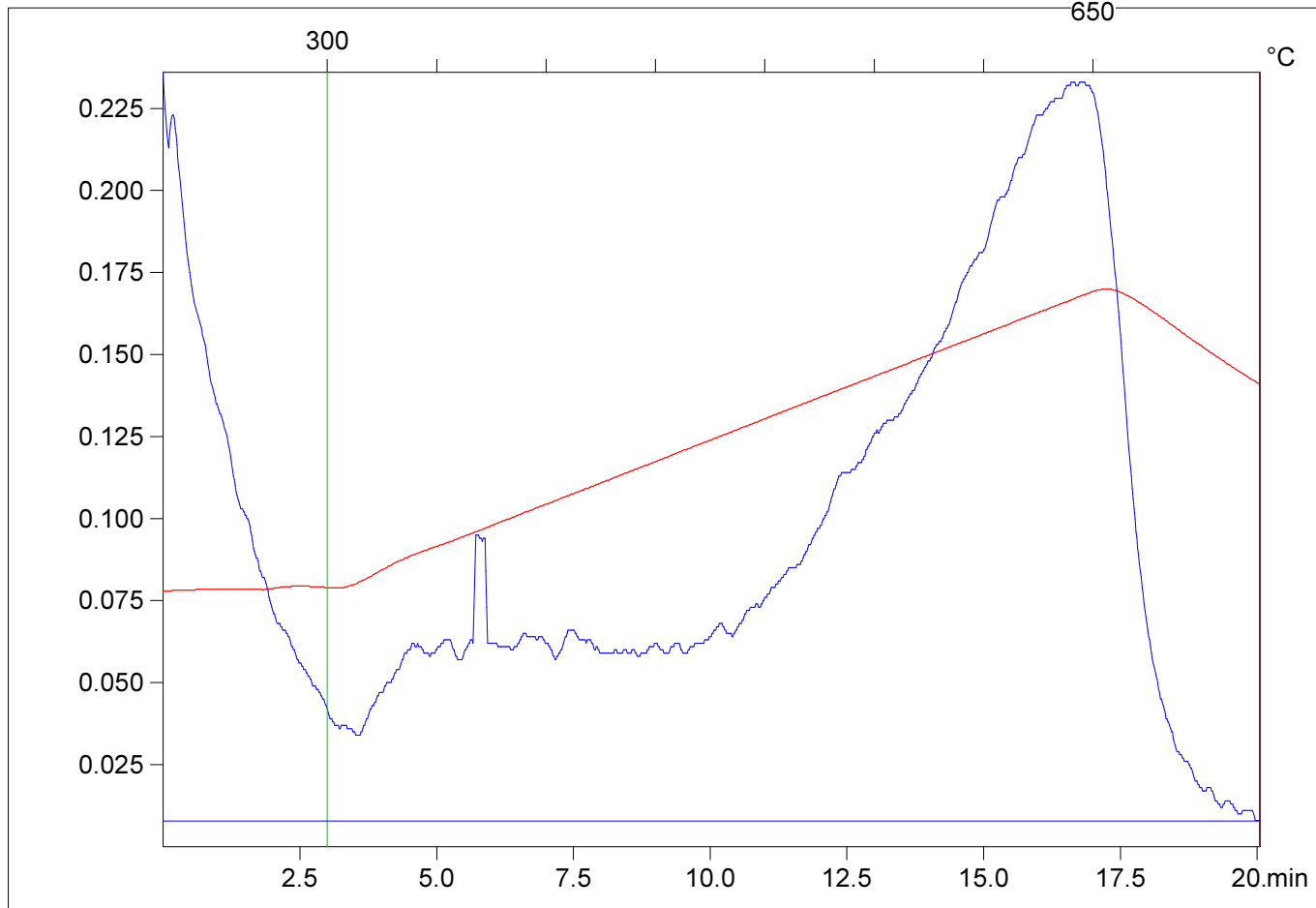
Customer :

Northeast Natural Energy LLC

Customer part :

Bogges 17H

Comment :



S1(mg/g)=0.04

S2(mg/g)=0.19

Tmax(°C)=593

TpkS2(°C)=635.0

PI=0.18

HI=6

Sample =wc9

Method =Bulk Rock

Cycle=Basic

KFID(10*9)=1342

Qty(mg)=61.2

TOC(%)=3.24

C:\SLB2020\2020USHO-P031\WC9.R00 : FID pyrolysis graphic

State

Pyro Status

Oxi Status

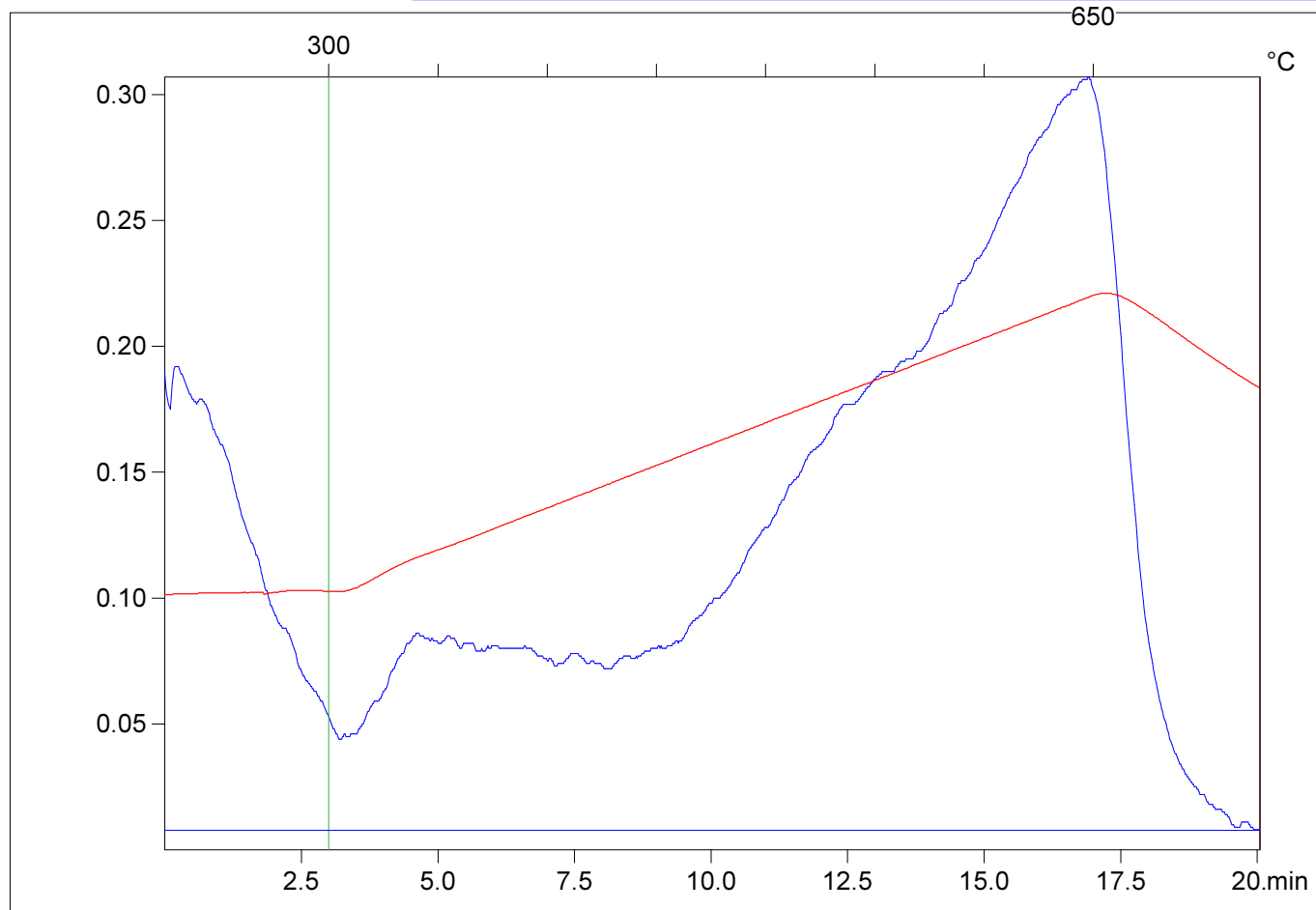
Customer :

Northeast Natural Energy LLC

Customer part :

Boggess 17H

Comment :



S1(mg/g)=0.04

S2(mg/g)=0.25

Tmax(°C)=601

TpkS2(°C)=643.0

PI=0.15

HI=5

Sample =wc10

Method =Bulk Rock

Cycle=Basic

KFID(10*9)=1342

Qty(mg)=66.7

TOC(%)=4.58

C:\SLB2020\2020USHO-P031\WC10.R00 : FID pyrolysis graphic

State

Pyro Status

Oxi Status

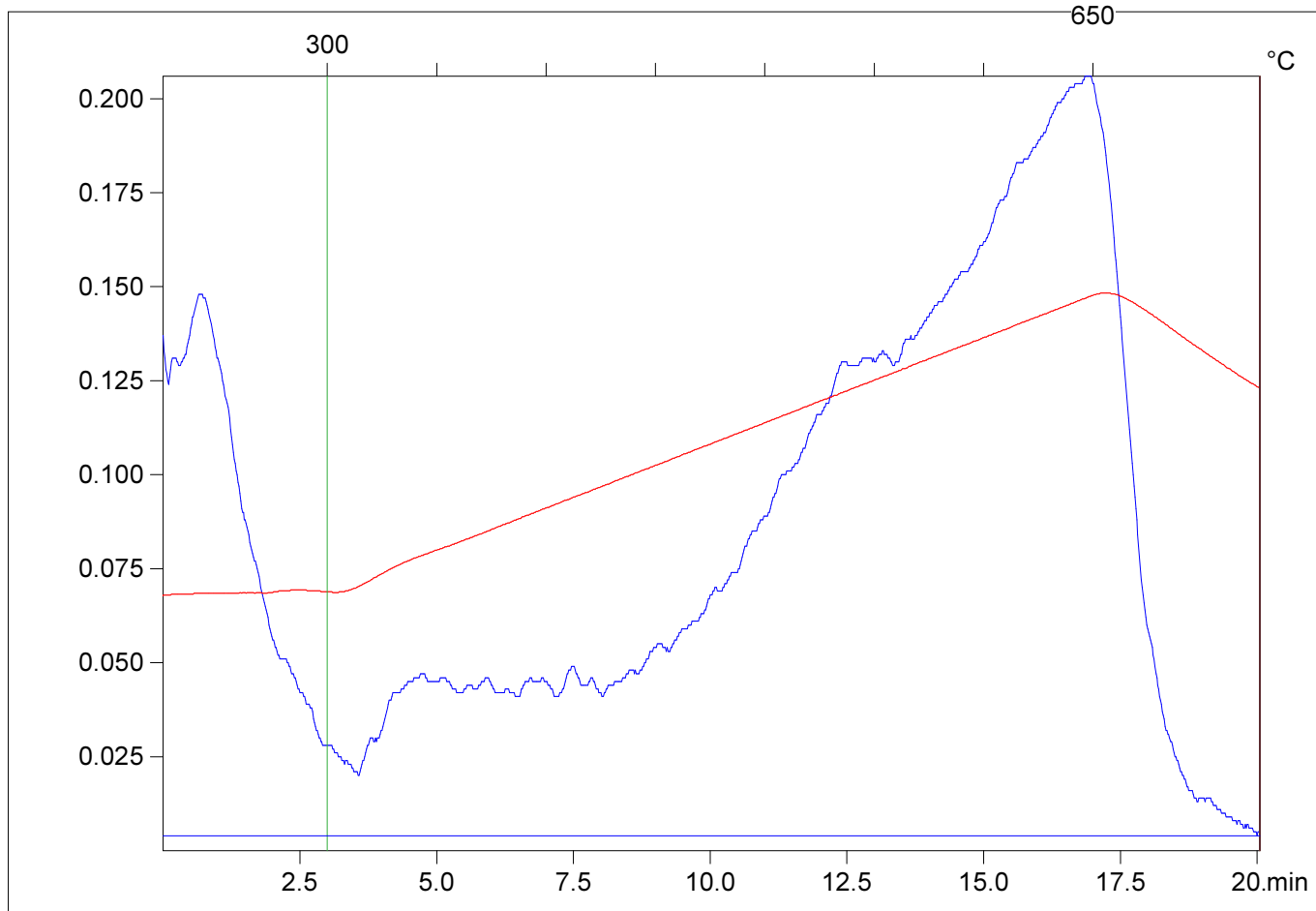
Customer :

Northeast Natural Energy LLC

Customer part :

Bogges 17H

Comment :



S1(mg/g)=0.04

S2(mg/g)=0.2

Tmax(°C)=600

TpkS2(°C)=642.0

PI=0.16

HI=5

Sample =wc11

Method =Bulk Rock

Cycle=Basic

KFID(10*9)=1342

Qty(mg)=54.9

TOC(%)=3.9

C:\SLB2020\2020USHO-P031\WC11.R00 : FID pyrolysis graphic

State

Pyro Status

Oxi Status

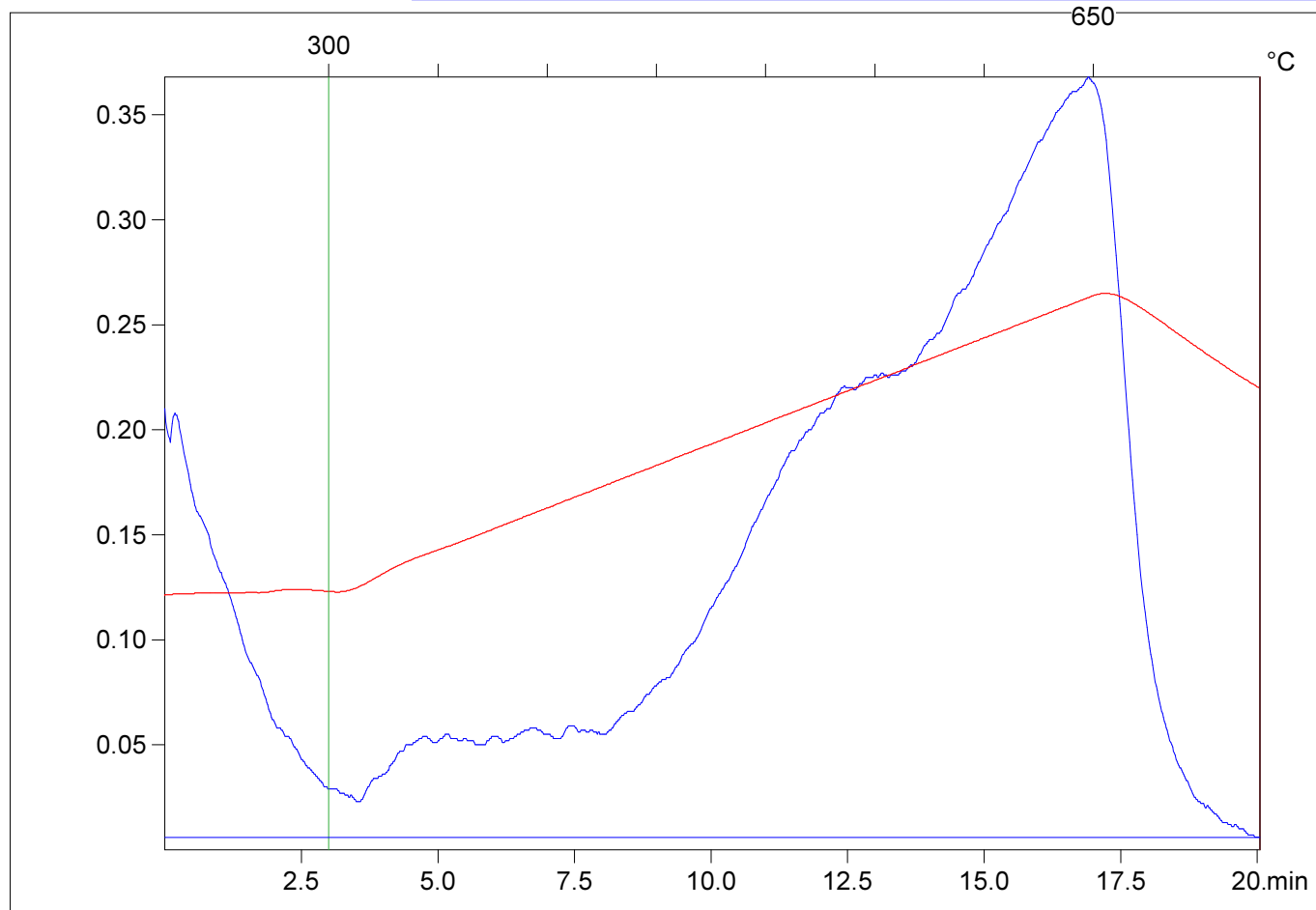
Customer :

Northeast Natural Energy LLC

Customer part :

Boggess 17H

Comment :



S1(mg/g)=0.04

S2(mg/g)=0.31

Tmax(°C)=601

TpkS2(°C)=643.0

PI=0.11

HI=5

Sample =wc12

Method =Bulk Rock

Cycle=Basic

KFID(10*9)=1342

Qty(mg)=59.3

TOC(%)=5.8

C:\SLB2020\2020USHO-P031\WC12.R00 : FID pyrolysis graphic

State Ok

Pyro Status No blank subtraction

Oxi Status No blank subtraction

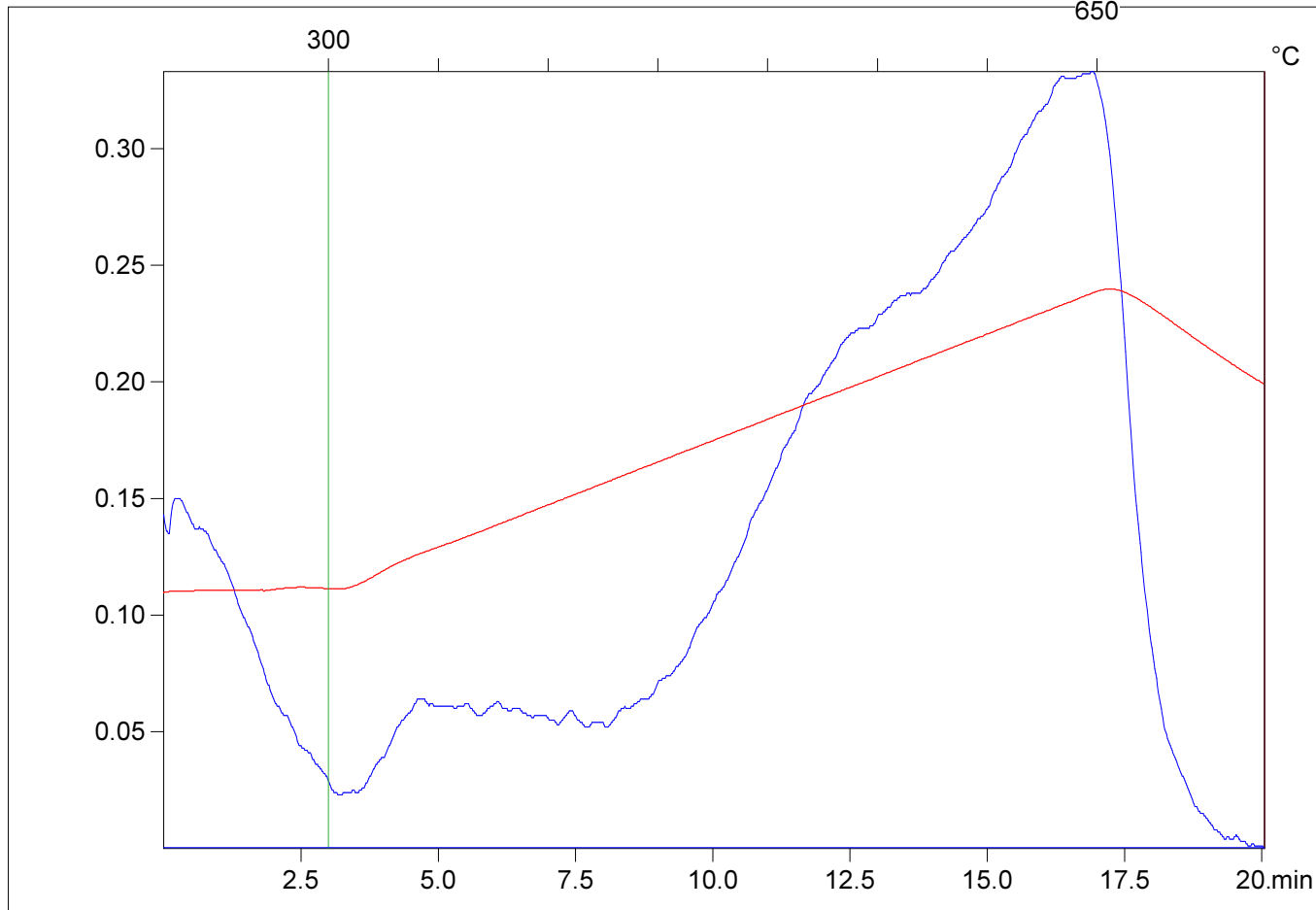
Customer :

Northeast Natural Energy LLC

Customer part :

Bogges 17H

Comment :



S1(mg/g)=0.03

S2(mg/g)=0.27

Tmax(°C)=601

TpkS2(°C)=643.0

PI=0.11

HI=5

Sample =wc13

Method =Bulk Rock

Cycle=Basic

KFID(10*9)=1342

Qty(mg)=69.5

TOC(%)=5.08

C:\SLB2020\2020USHO-P031\WC13.R00 : FID pyrolysis graphic

State

Pyro Status

Oxi Status

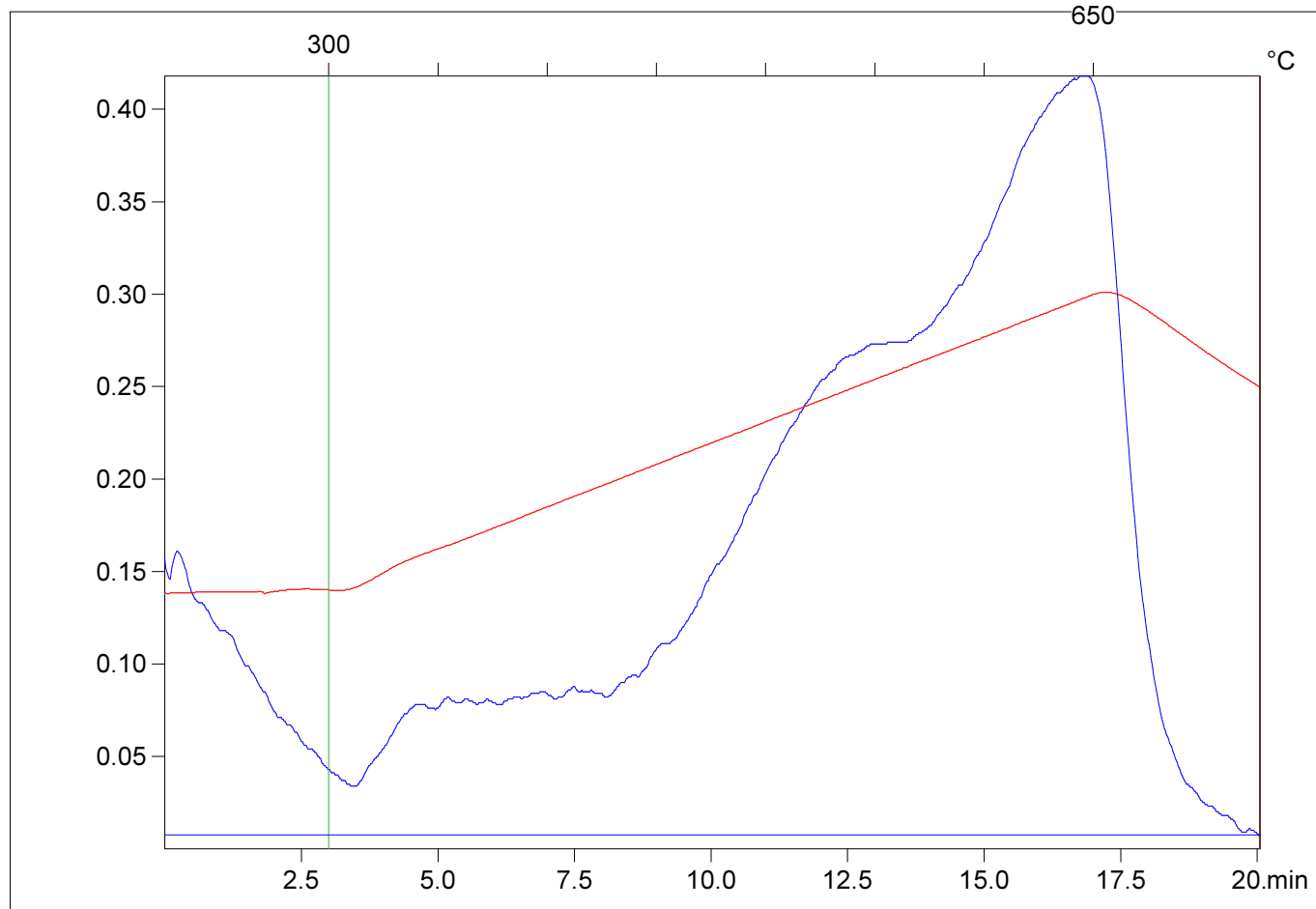
Customer :

Northeast Natural Energy LLC

Customer part :

Boggess 17H

Comment :



S1(mg/g)=0.04

S2(mg/g)=0.38

Tmax(°C)=597

TpkS2(°C)=639.0

PI=0.09

HI=6

Sample =wc14

Method =Bulk Rock

Cycle=Basic

KFID(10*9)=1342

Qty(mg)=59.7

TOC(%)=6.46

C:\SLB2020\2020USHO-P031\WC14.R00 : FID pyrolysis graphic

State

Pyro Status

Oxi Status

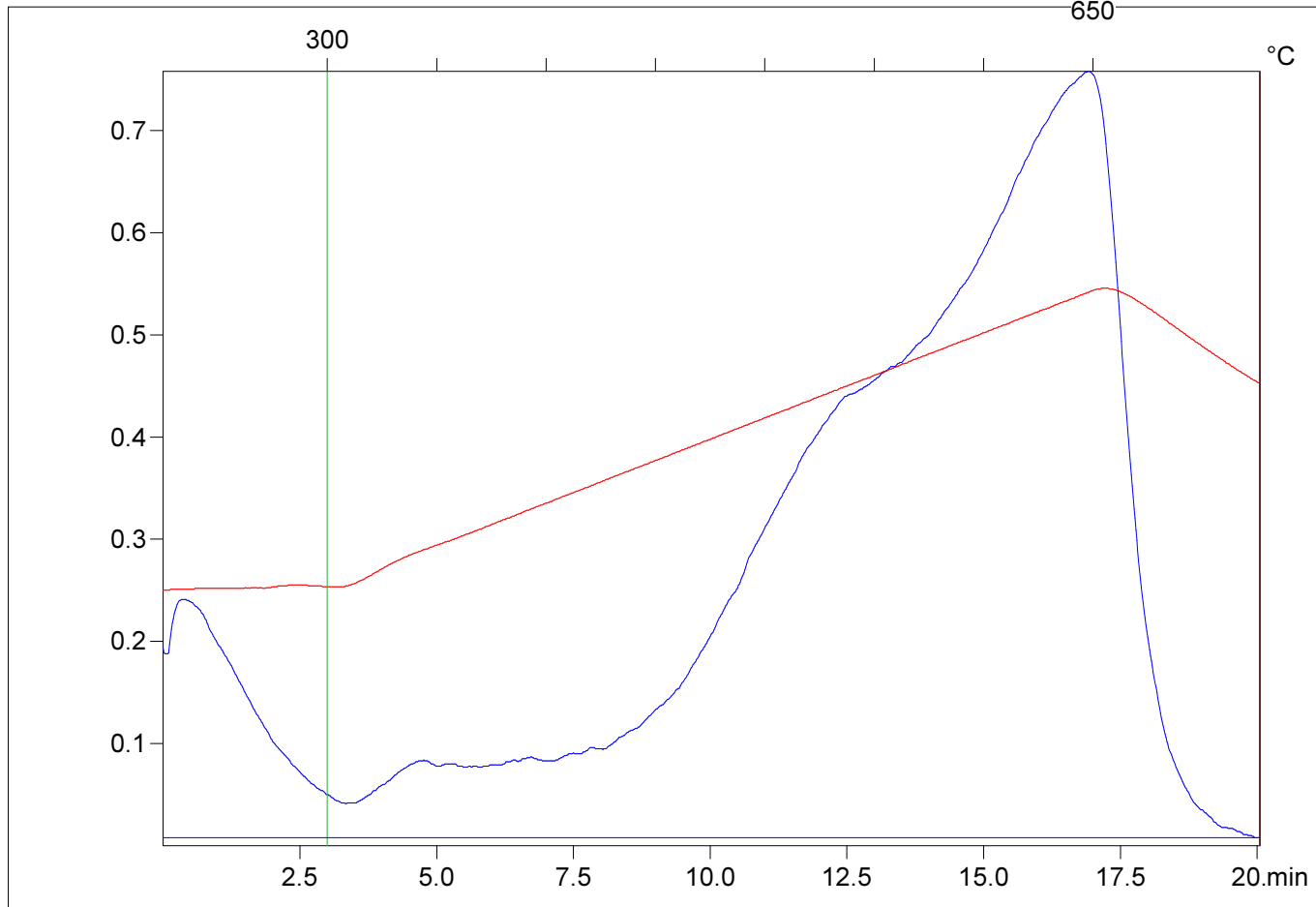
Customer :

Northeast Natural Energy LLC

Customer part :

Bogges 17H

Comment :



S1(mg/g)=0.05

S2(mg/g)=0.54

Tmax(°C)=601

TpkS2(°C)=643.0

PI=0.08

HI=6

Sample =wc15

Method =Bulk Rock

Cycle=Basic

KFID(10*9)=1342

Qty(mg)=68.2

TOC(%)=8.36

C:\SLB2020\2020USHO-P031\WC15.R00 : FID pyrolysis graphic

State

Pyro Status

Oxi Status

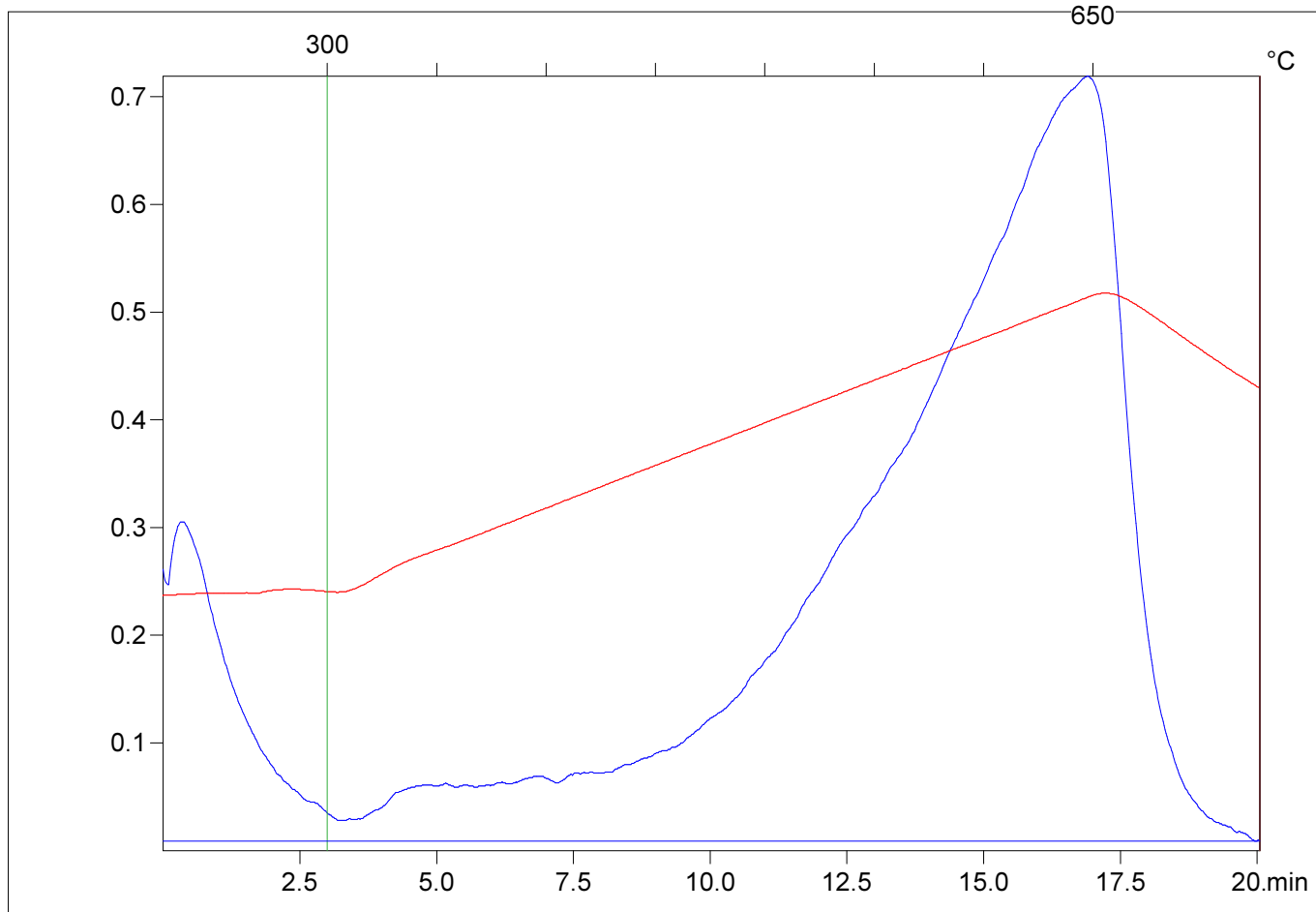
Customer :

Northeast Natural Energy LLC

Customer part :

Bogges 17H

Comment :



S1(mg/g)=0.05

S2(mg/g)=0.43

Tmax(°C)=601

TpkS2(°C)=643.0

PI=0.1

HI=7

Sample =wc16

Method =Bulk Rock

Cycle=Basic

KFID(10*9)=1342

Qty(mg)=68.7

TOC(%)=6.47

C:\SLB2020\2020USHO-P031\WC16.R00 : FID pyrolysis graphic

State Ok

Pyro Status No blank subtraction

Oxi Status No blank subtraction

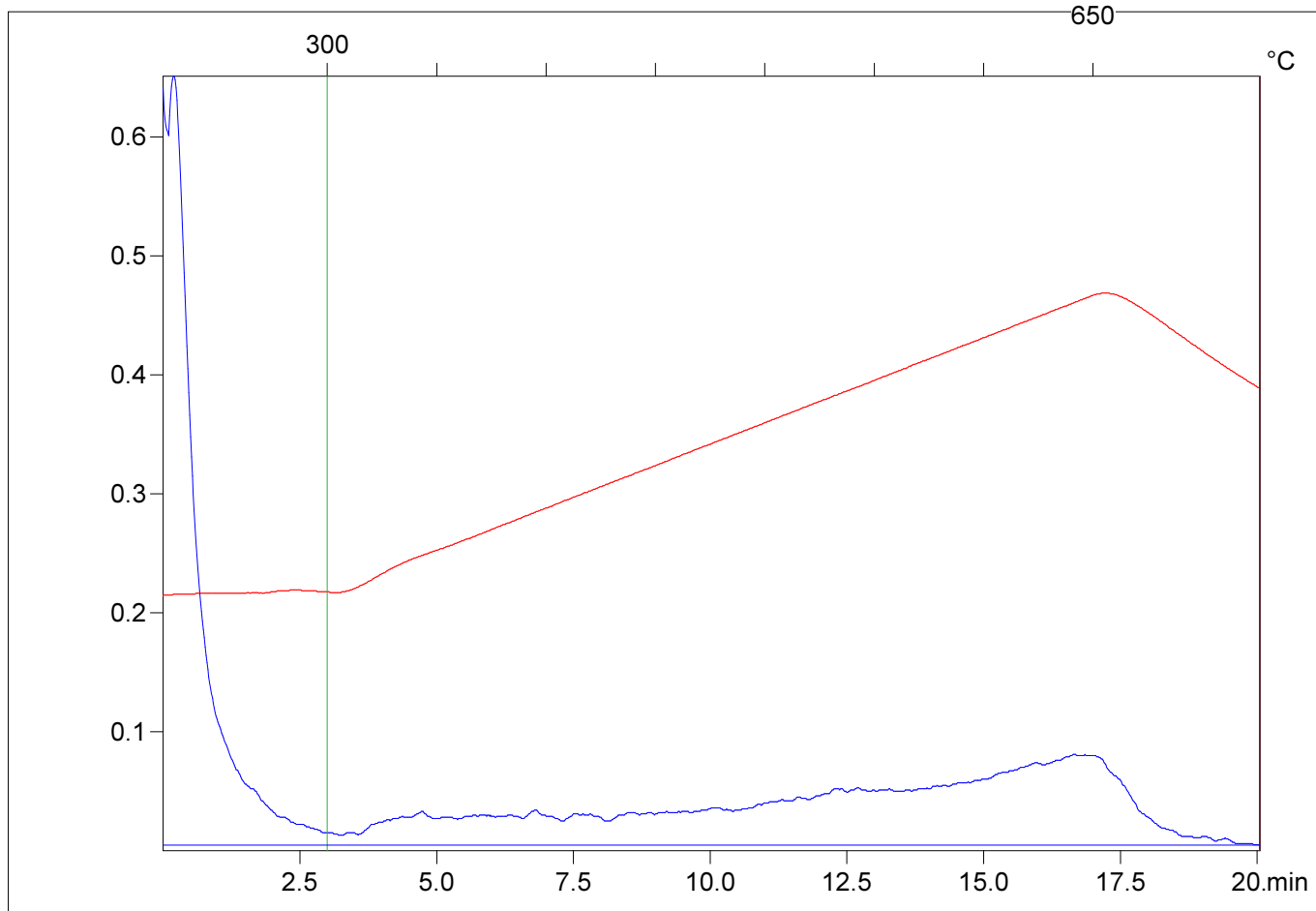
Customer :

Northeast Natural Energy LLC

Customer part :

Bogges 17H

Comment :



S1(mg/g)=0.05

S2(mg/g)=0.07

Tmax(°C)=594

TpkS2(°C)=636.0

PI=0.44

HI=5

Sample =wc17

Method =Bulk Rock

Cycle=Basic

KFID(10*9)=1342

Qty(mg)=67.7

TOC(%)=1.33

C:\SLB2020\2020USHO-P031\WC17.R00 : FID pyrolysis graphic

State

Pyro Status

Oxi Status

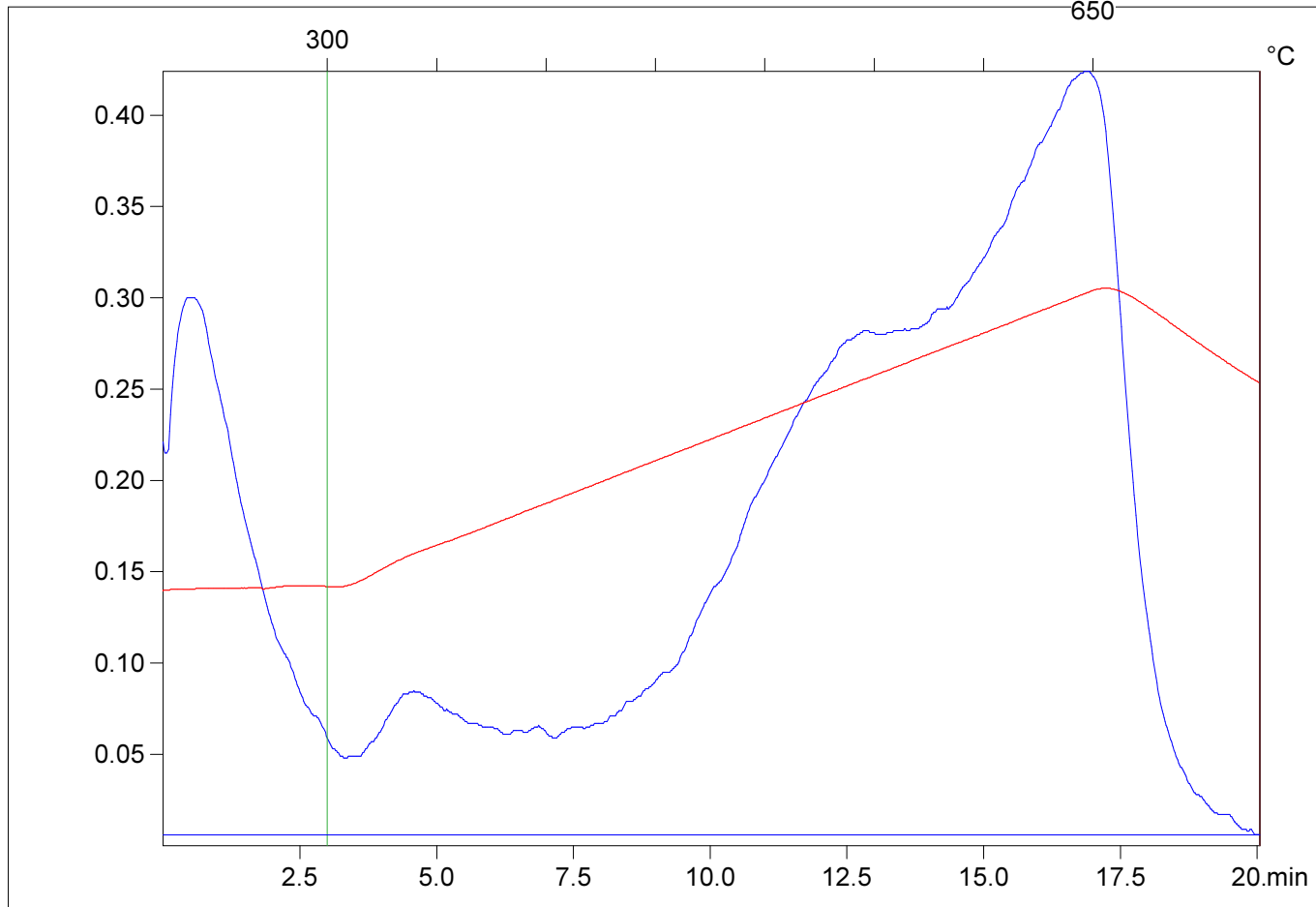
Customer :

Northeast Natural Energy LLC

Customer part :

Bogges 17H

Comment :



S1(mg/g)=0.08

S2(mg/g)=0.41

Tmax(°C)=599

TpkS2(°C)=641.0

PI=0.16

HI=6

Sample =wc18

Method =Bulk Rock

Cycle=Basic

KFID(10*9)=1342

Qty(mg)=54.7

TOC(%)=7.39

C:\SLB2020\2020USHO-P031\WC18.R00 : FID pyrolysis graphic

State

Pyro Status

Oxi Status

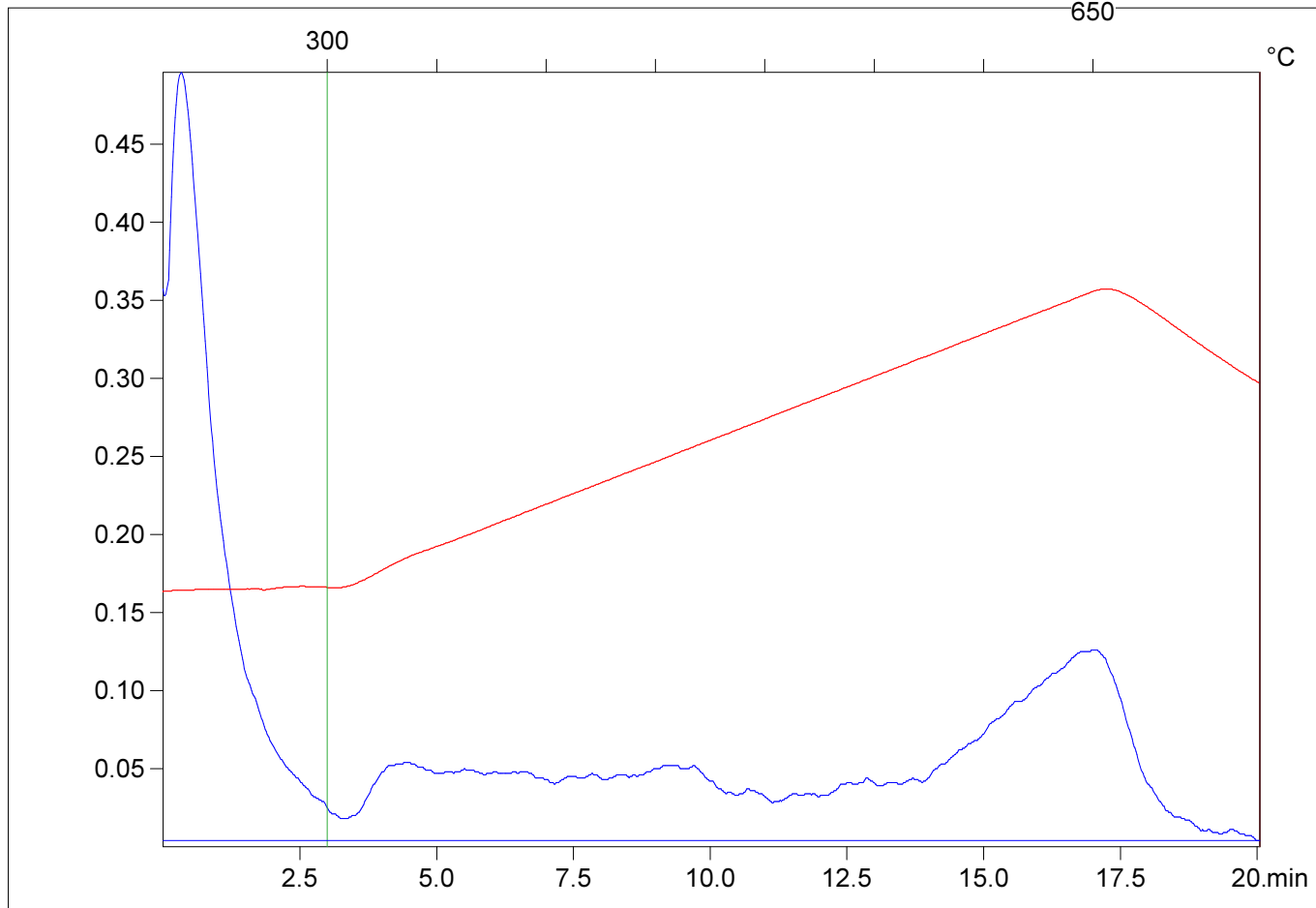
Customer :

Northeast Natural Energy LLC

Customer part :

Bogges 17H

Comment :



S1(mg/g)=0.06

S2(mg/g)=0.09

Tmax(°C)=603

TpkS2(°C)=645.0

PI=0.41

HI=11

Sample =wc19

Method =Bulk Rock

Cycle=Basic

KFID(10*9)=1342

Qty(mg)=68.2

TOC(%)=0.85

C:\SLB2020\2020USHO-P031\WC19.R00 : FID pyrolysis graphic

State

Pyro Status

Oxi Status

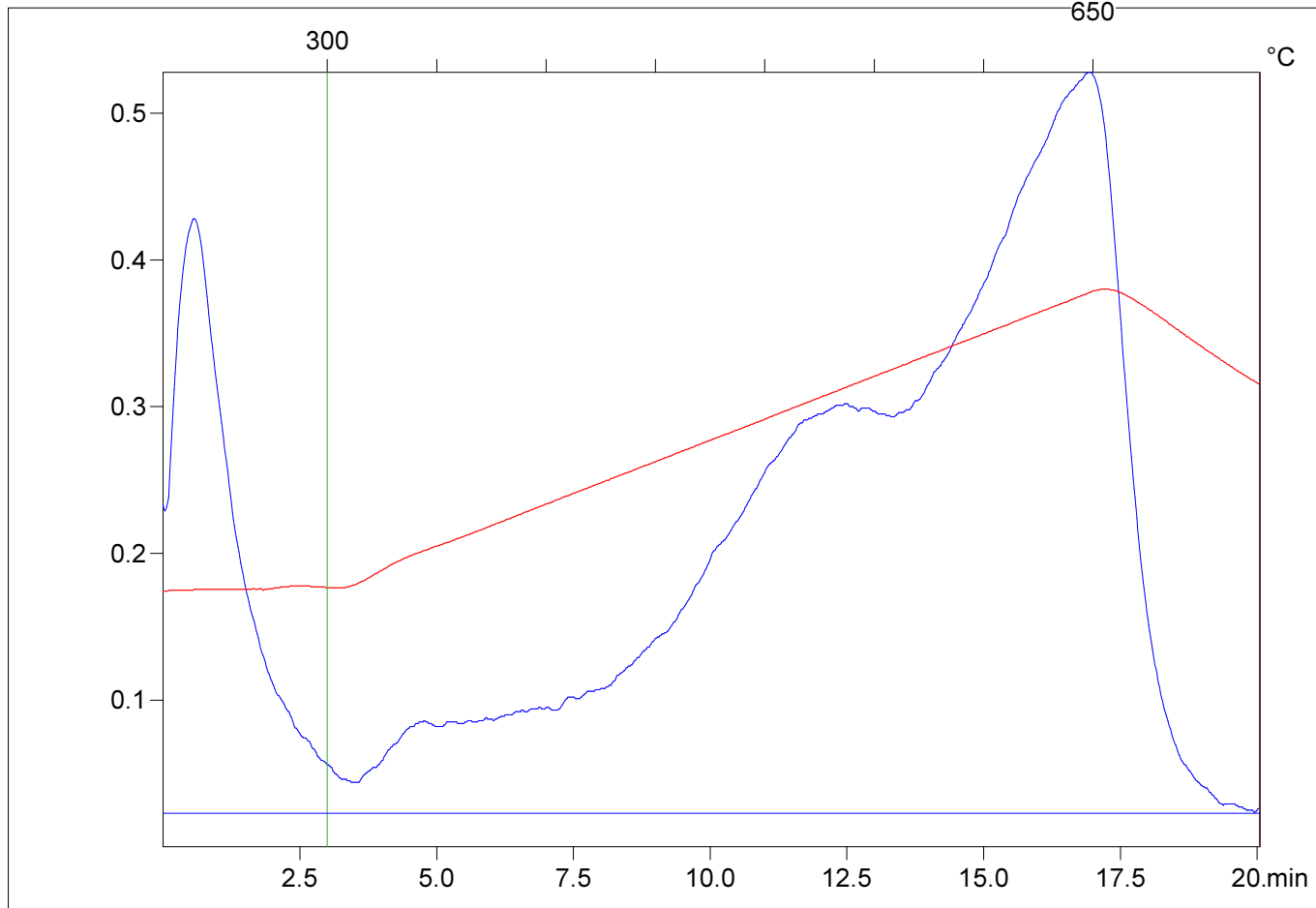
Customer :

Northeast Natural Energy LLC

Customer part :

Bogges 17H

Comment :



S1(mg/g)=0.07

S2(mg/g)=0.4

Tmax(°C)=598

TpkS2(°C)=643.0

PI=0.15

HI=5

Sample =wc20

Method =Bulk Rock

Cycle=Basic

KFID(10*9)=1328

Qty(mg)=63.4

TOC(%)=7.43

C:\SLB2020\2020USHO-P031\WC20.R00 : FID pyrolysis graphic

State

Pyro Status

Oxi Status

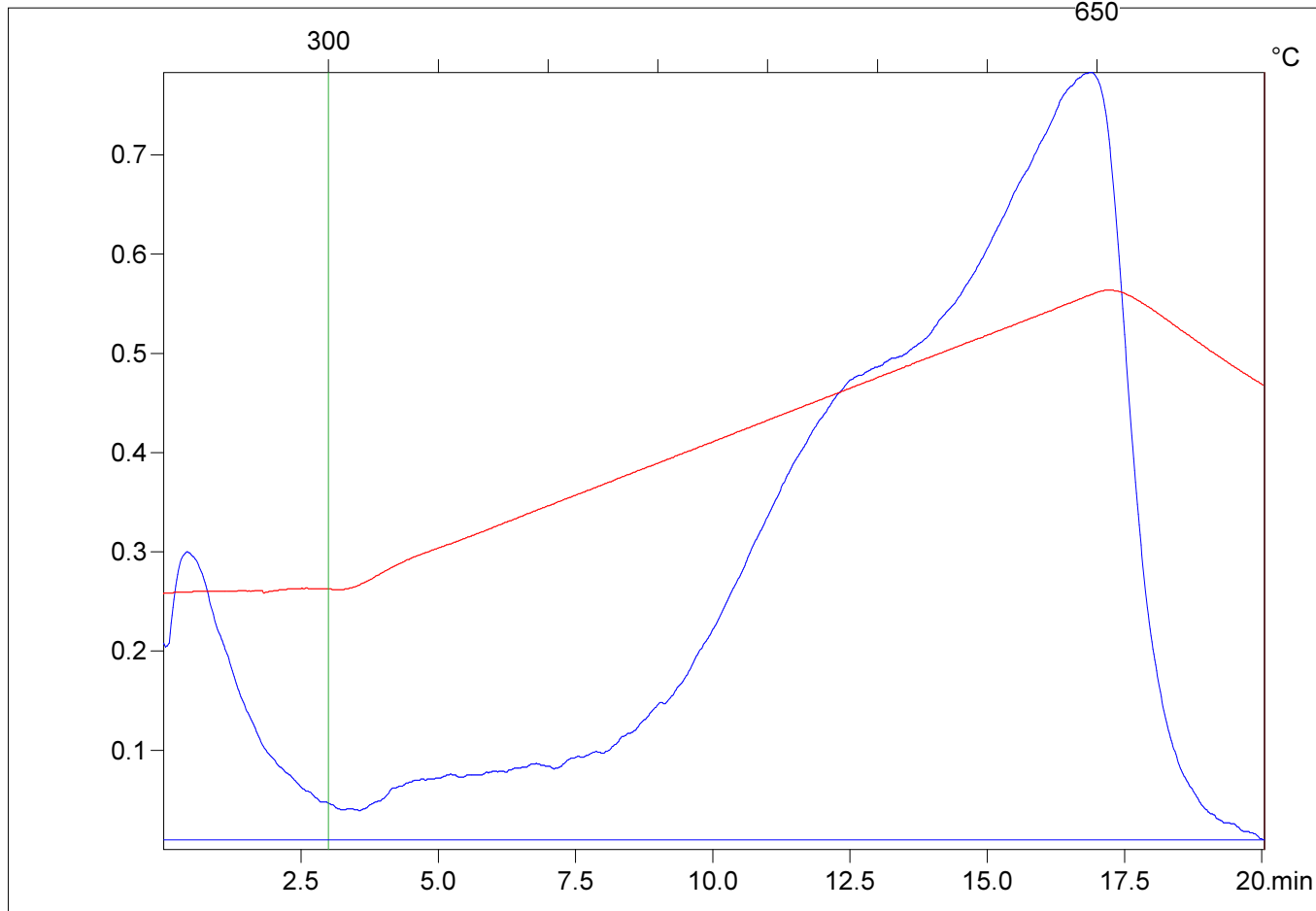
Customer :

Northeast Natural Energy LLC

Customer part :

Bogges 17H

Comment :



S1(mg/g)=0.05

S2(mg/g)=0.58

Tmax(°C)=597

TpkS2(°C)=642.0

PI=0.09

HI=7

Sample =wc21

Method =Bulk Rock

Cycle=Basic

KFID(10*9)=1328

Qty(mg)=65.4

TOC(%)=8.39

C:\SLB2020\2020USHO-P031\WC21.R00 : FID pyrolysis graphic

State

Pyro Status

Oxi Status

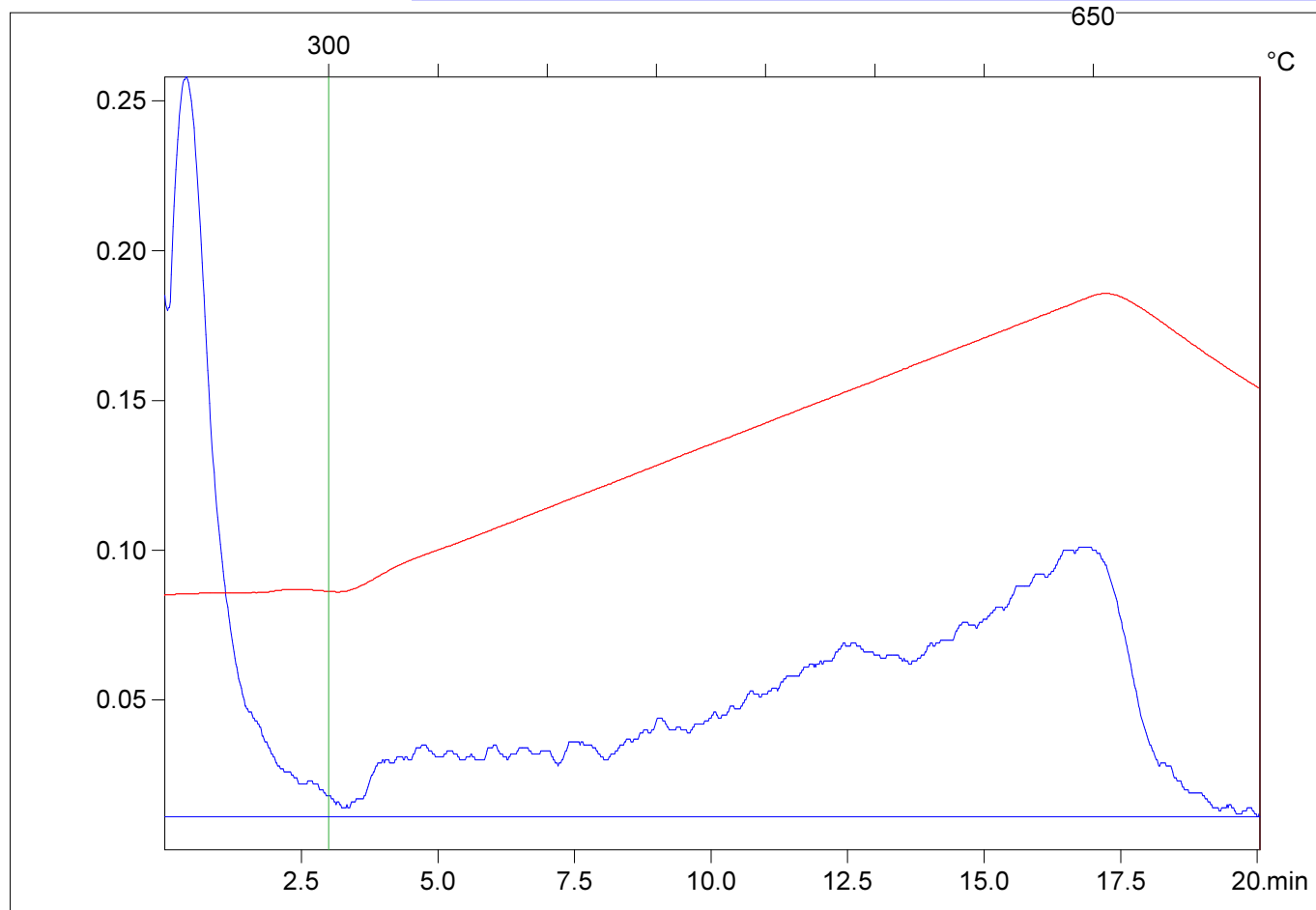
Customer :

Northeast Natural Energy LLC

Customer part :

Bogges 17H

Comment :



S1(mg/g)=0.03

S2(mg/g)=0.09

Tmax(°C)=594

TpkS2(°C)=639.0

PI=0.28

HI=5

Sample =wc22

Method =Bulk Rock

Cycle=Basic

KFID(10*9)=1328

Qty(mg)=57.4

TOC(%)=1.74

C:\SLB2020\2020USHO-P031\WC22.R00 : FID pyrolysis graphic

State

Pyro Status

Oxi Status

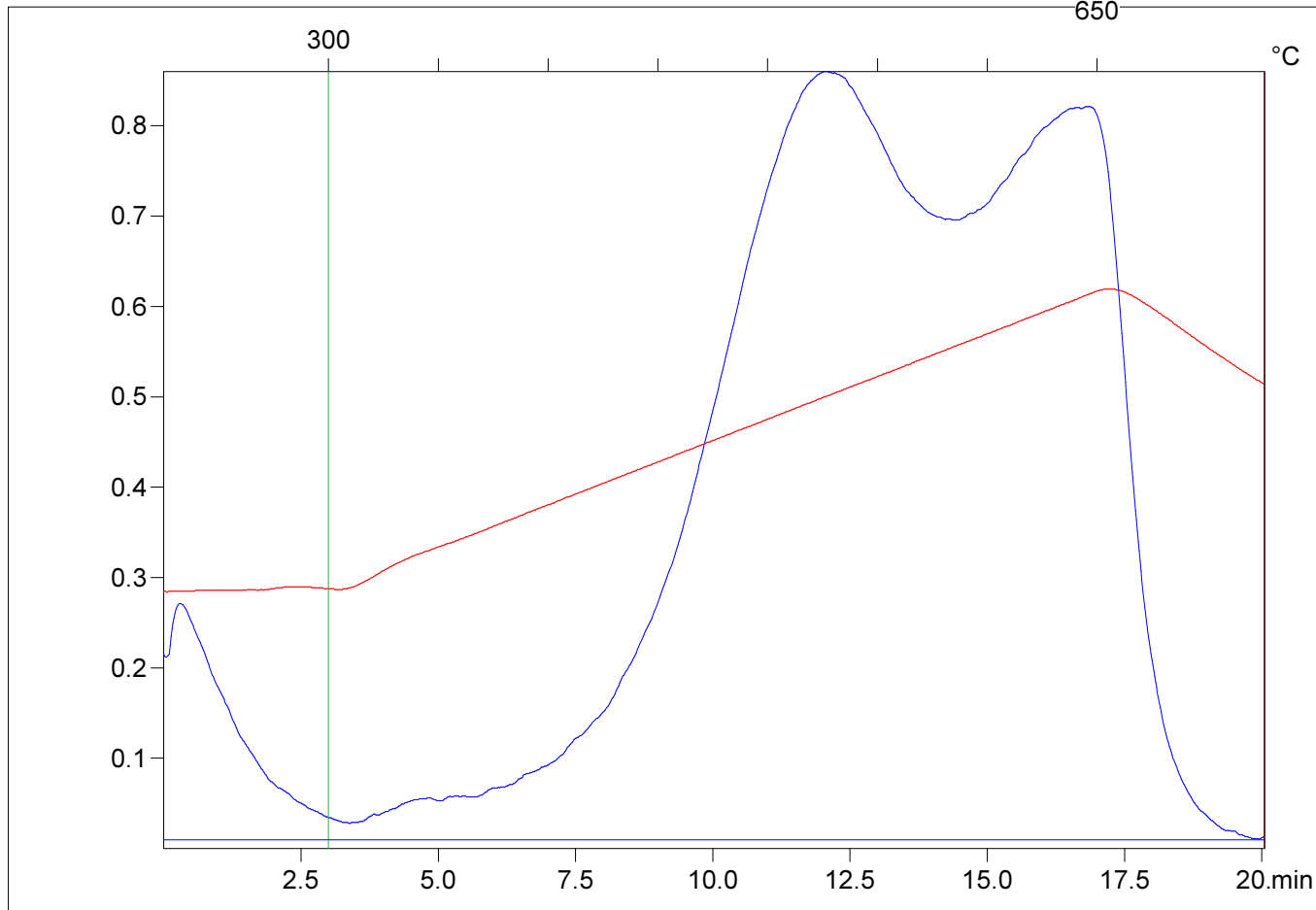
Customer :

Northeast Natural Energy LLC

Customer part :

Bogges 17H

Comment :



S1(mg/g)=0.05

S2(mg/g)=0.9

Tmax(°C)=478

TpkS2(°C)=523.0

PI=0.05

HI=8

Sample =wc23

Method =Bulk Rock

Cycle=Basic

KFID(10*9)=1328

Qty(mg)=58.7

TOC(%)=11.12

C:\SLB2020\2020USHO-P031\WC23.R00 : FID pyrolysis graphic

State Ok

Pyro Status No blank subtraction

Oxi Status No blank subtraction

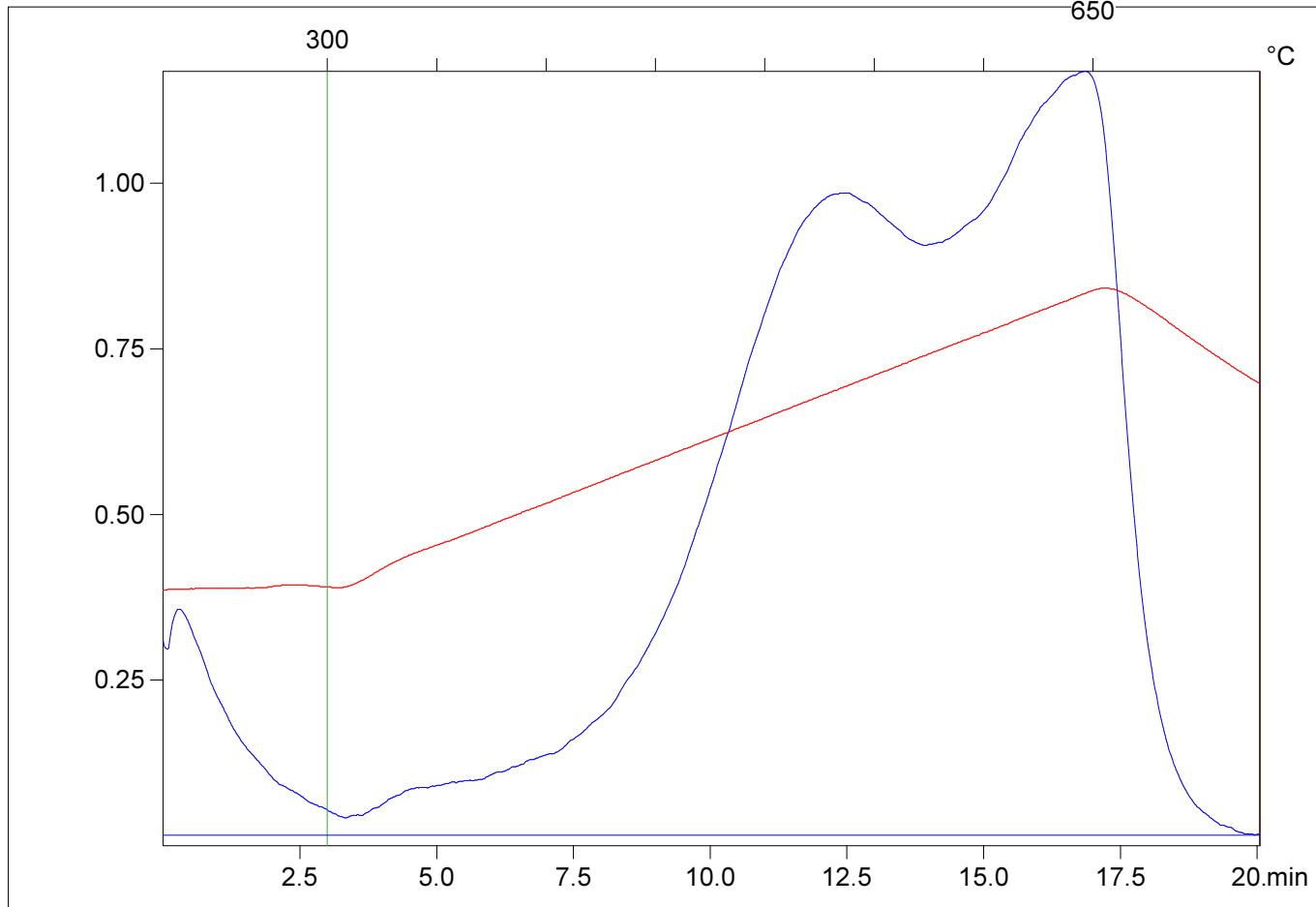
Customer :

Northeast Natural Energy LLC

Customer part :

Boggess 17H

Comment :



S1(mg/g)=0.06

S2(mg/g)=1.05

Tmax(°C)=596

TpkS2(°C)=641.0

PI=0.05

HI=10

Sample =wc24

Method =Bulk Rock

Cycle=Basic

KFID(10*9)=1328

Qty(mg)=64.2

TOC(%)=11

C:\SLB2020\2020USHO-P031\WC24.R00 : FID pyrolysis graphic

State

Pyro Status

Oxi Status

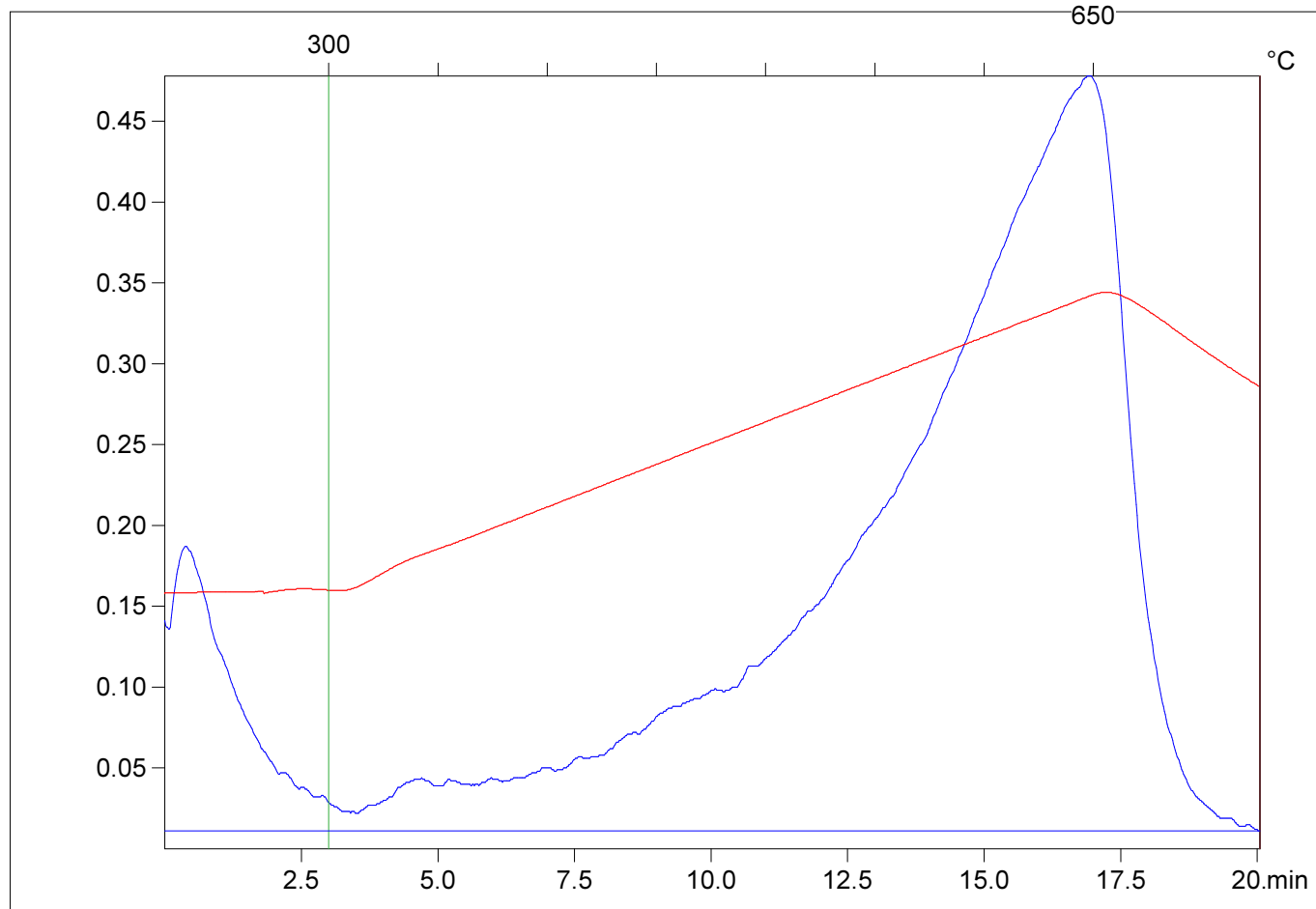
Customer :

Northeast Natural Energy LLC

Customer part :

Boggess 17H

Comment :



S1(mg/g)=0.03

S2(mg/g)=0.29

Tmax(°C)=598

TpkS2(°C)=643.0

PI=0.09

HI=7

Sample =wc25

Method =Bulk Rock

Cycle=Basic

KFID(10*9)=1328

Qty(mg)=65.9

TOC(%)=4.29

C:\SLB2020\2020USHO-P031\WC25.R00 : FID pyrolysis graphic

State

Pyro Status

Oxi Status

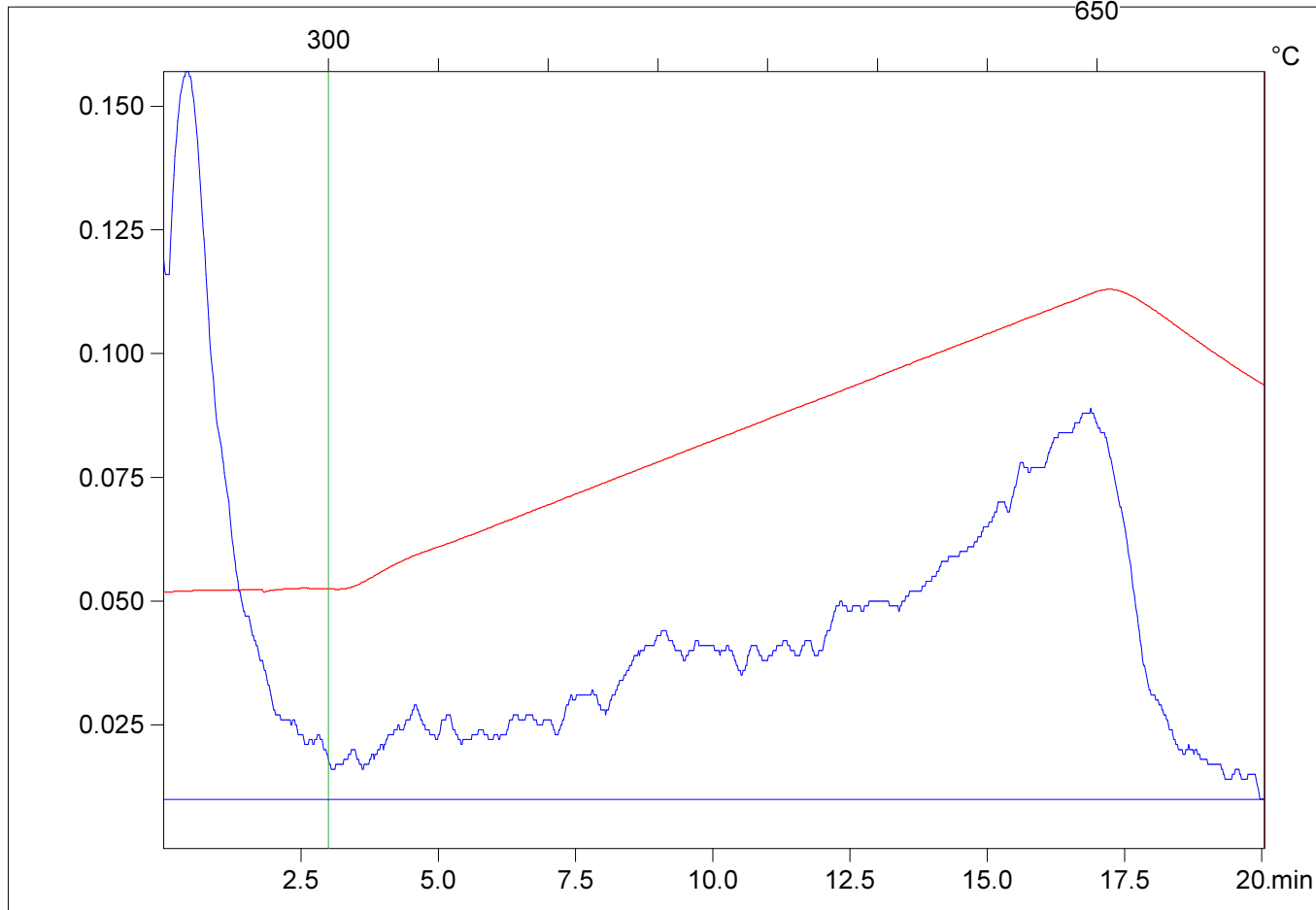
Customer :

Northeast Natural Energy LLC

Customer part :

Bogges 17H

Comment :



S1(mg/g)=0.02

S2(mg/g)=0.07

Tmax(°C)=598

TpkS2(°C)=643.0

PI=0.25

HI=5

Sample =wc26

Method =Bulk Rock

Cycle=Basic

KFID(10*9)=1328

Qty(mg)=62.4

TOC(%)=1.39

C:\SLB2020\2020USHO-P031\WC26.R00 : FID pyrolysis graphic

State

Pyro Status

Oxi Status

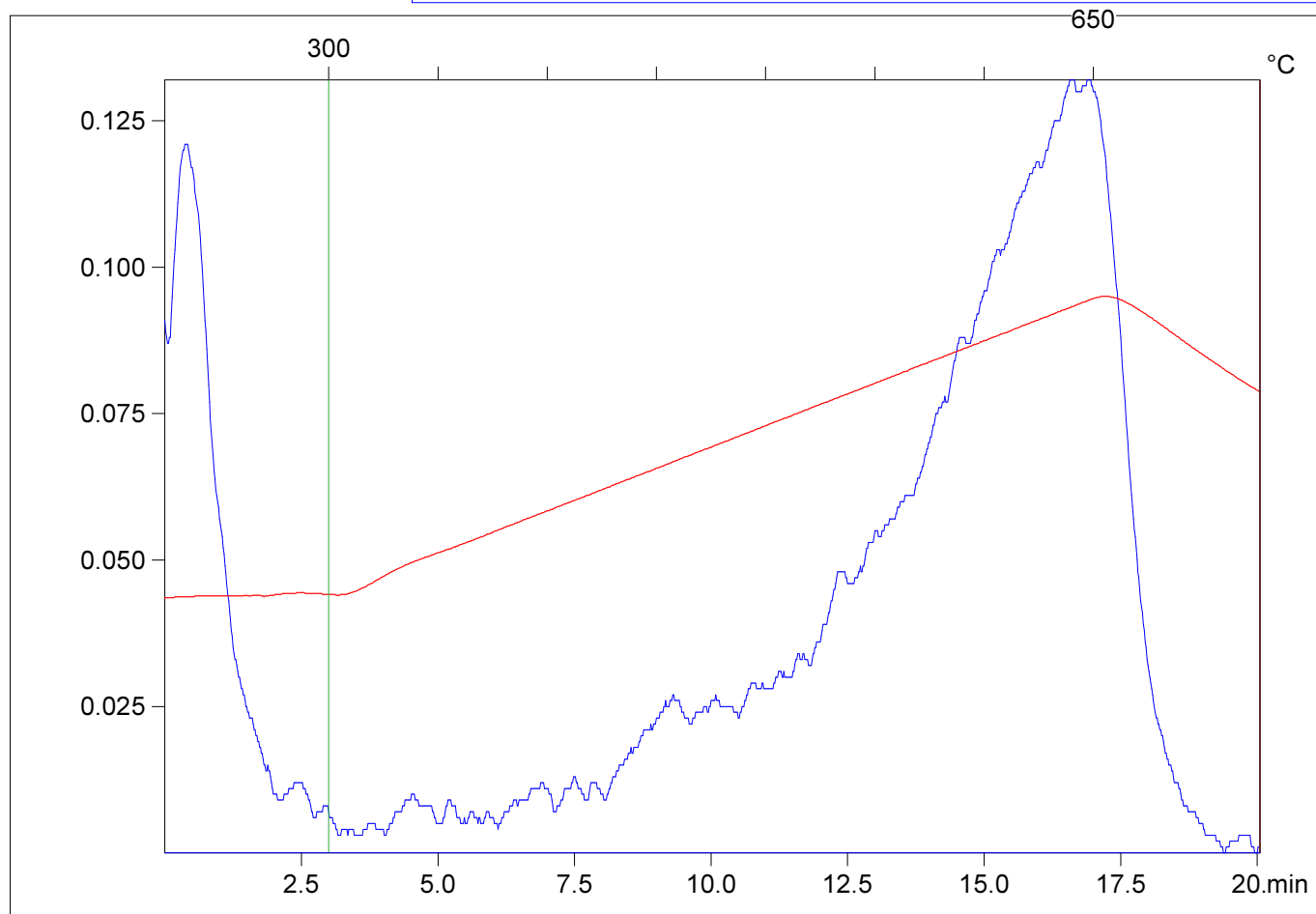
Customer :

Northeast Natural Energy LLC

Customer part :

Bogges 17H

Comment :



S1(mg/g)=0.02

S2(mg/g)=0.1

Tmax(°C)=590

TpkS2(°C)=635.0

PI=0.17

HI=6

Sample =wc27

Method =Bulk Rock

Cycle=Basic

KFID(10*9)=1328

Qty(mg)=51.6

TOC(%)=1.76

C:\SLB2020\2020USHO-P031\WC27.R00 : FID pyrolysis graphic

State

Pyro Status

Oxi Status

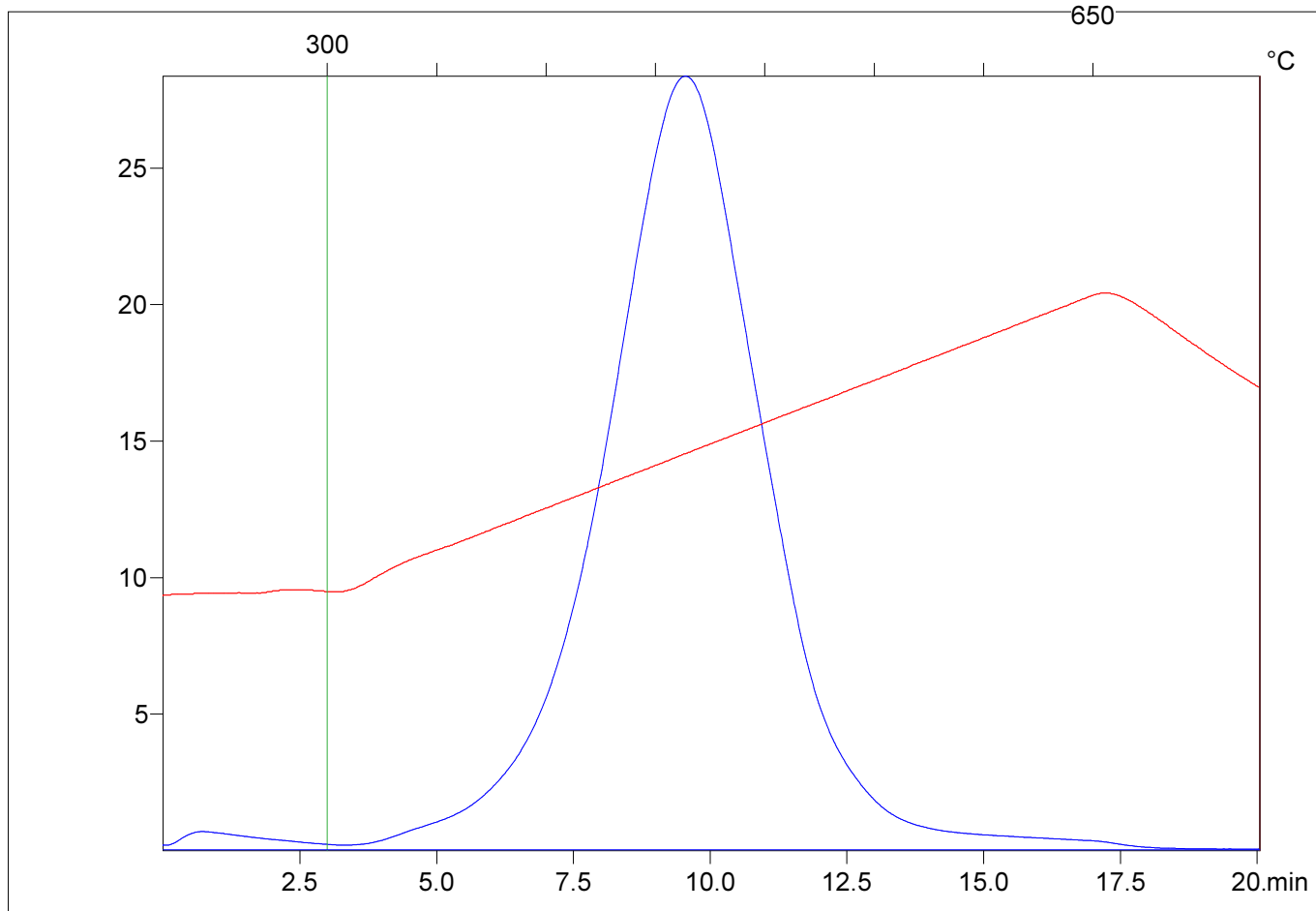
Customer :

Northeast Natural Energy LLC

Customer part :

Bogges 17H

Comment :



S1(mg/g)=0.16

S2(mg/g)=12.43

Tmax(°C)=416

TpkS2(°C)=461.0

PI=0.01

HI=384

Sample =std

Method =Bulk Rock

Cycle=Calib

KFID(10*9)=1328

Qty(mg)=63.4

TOC(%)=3.24

C:\SLB2020\STANDARD\BULKROCK\CALIB.R42 : FID pyrolysis graphic

State Ok

Pyro Status No blank subtraction

Oxi Status No blank subtraction