

MIP Air and Noise Monitoring



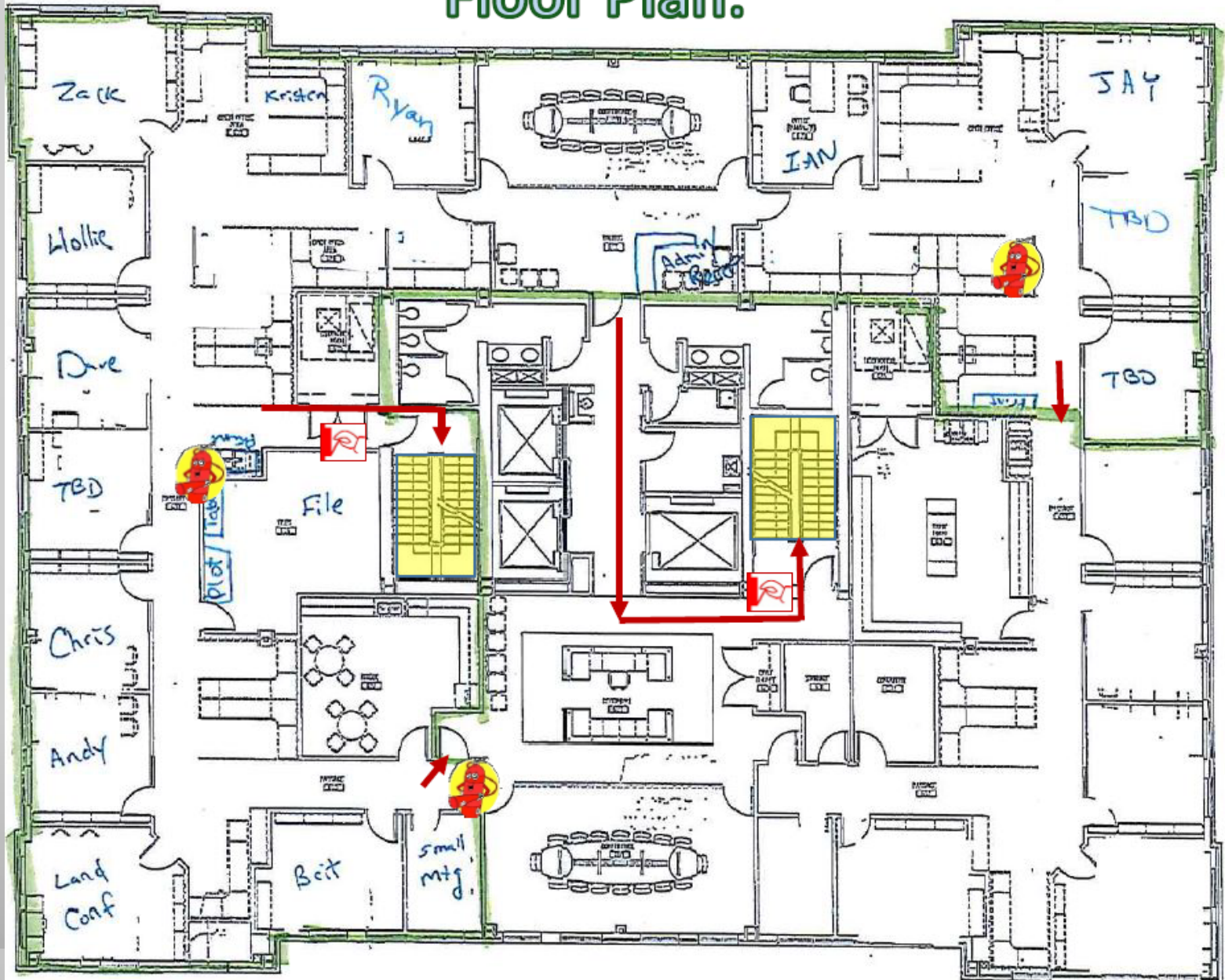


northeast
NATURAL ENERGY

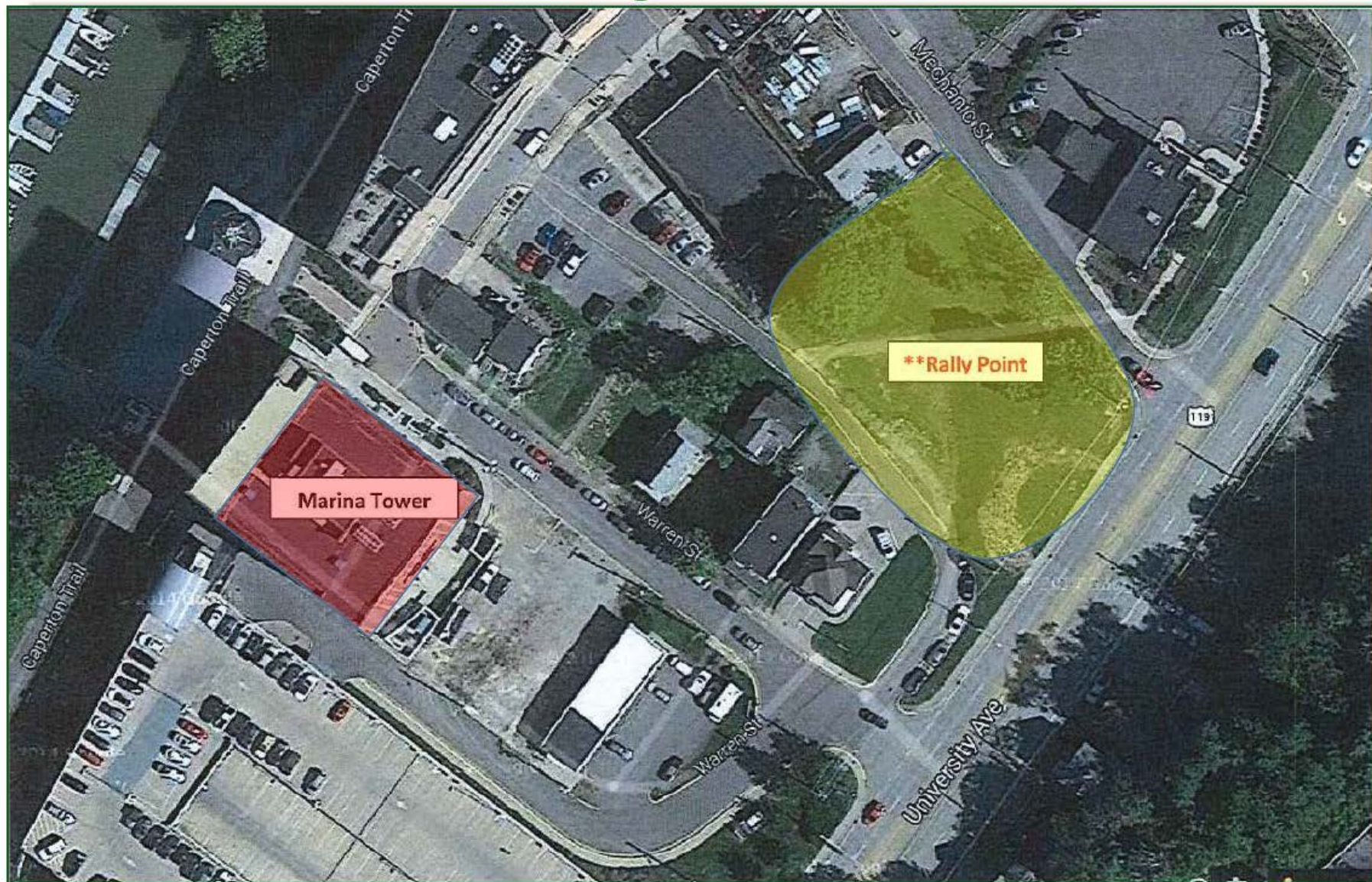
Emergency Procedures



Floor Plan:



Rally Point:





Charleston

- **Charleston Office:** Chase Tower has two stairwells for use in emergency situations. When evacuation is required:
 1. DO NOT RUN, but move in a brisk, quick manner.
 2. Go to the nearest designated or safe stairwell or exit. **DO NOT USE THE ELEVATORS.**
 3. Floor Monitor will check the office to be certain employees have evacuated.
- Page 2 of 6

- 4. Remove high heels or other footwear that may inhibit walking safely down stairs. (Carry them with you for use once you leave the stairwell.)
- 5. Use the handrail on your right side.
- 6. Go to your predetermined Safe Refuge Area unless directed otherwise by the Fire Department or other appropriate emergency response personnel.
- 7. Allow room for others in an orderly flow as they enter the stairwell; however, do not hold up traffic unnecessarily.
- 8. Acquire assistance for those who are slower moving or handicapped.
- 9. Dispel any rumors or false information to reduce panic.
- 10. Any injuries occurring in the stairwell should be treated at the nearest floor landing, if required, and when practical.
- 11. Stay together and be aware of incoming emergency response vehicles.

- The Safe Refuge Area is located at the west end of Haddad Riverfront Park or other locations as directed by the Fire Department or other appropriate emergency response personnel directing the evacuation.

Agenda:

- NNE Safety Statement
- NNE Enviro Statement
- Site overview
- Dr. McCawley



- NNE is dedicated to developing a safe and healthy environment for all employees and contractors through the combination of engineering design, practicality, and a hands on approach.

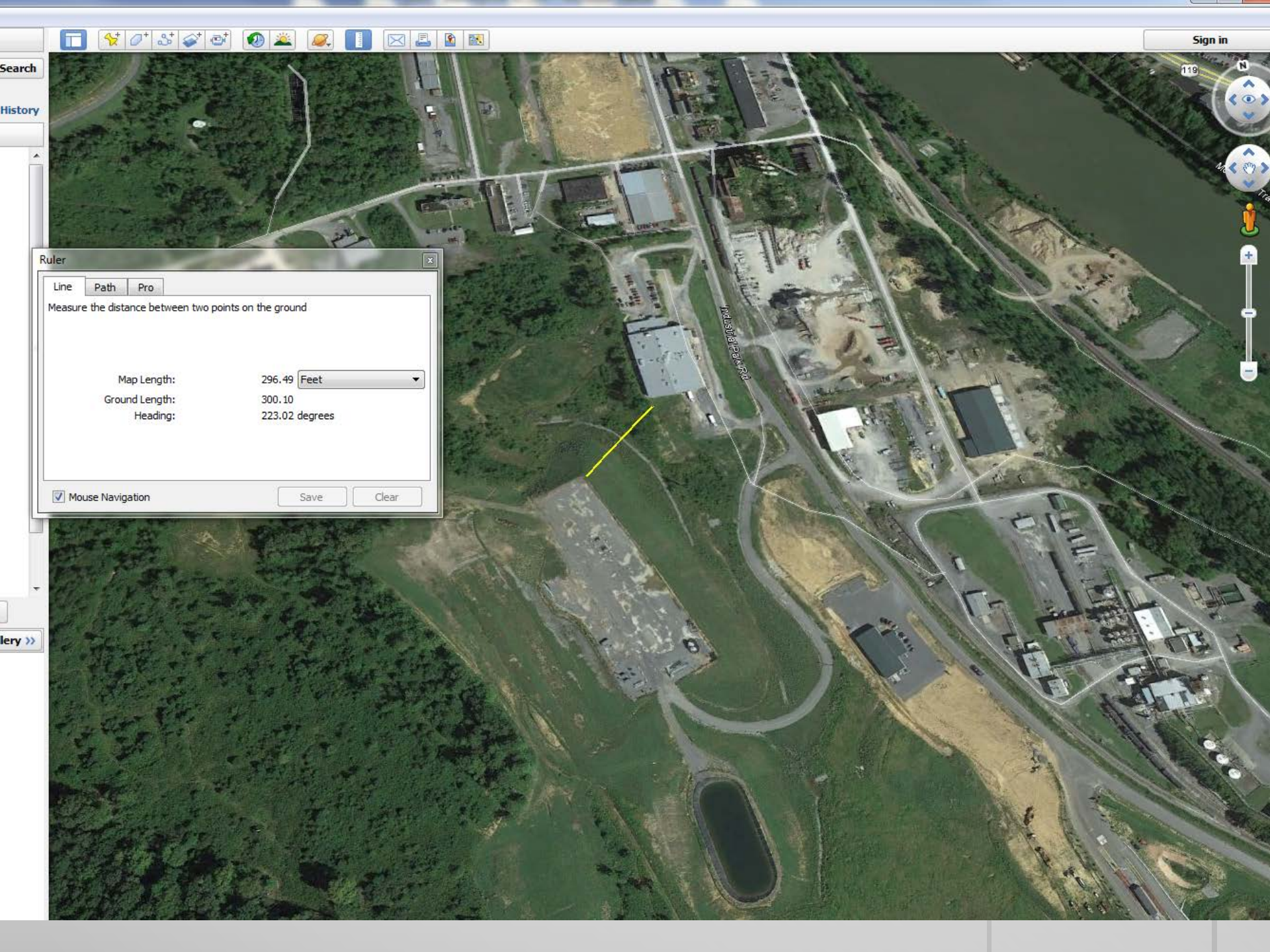


- NNE is committed to protecting the environment by maintaining a strong anti-pollution and spill prevention program in all areas where it operates









Sign in

Search

History

Ruler

Line Path Pro

Measure the distance between two points on the ground

Map Length: 296.49 Feet

Ground Length: 300.10

Heading: 223.02 degrees

Mouse Navigation

Save

Clear

Layers >>



earch

istory

119



Ruler

Line Path Pro

Measure the distance between two points on the ground

Map Length: 750.84 Feet

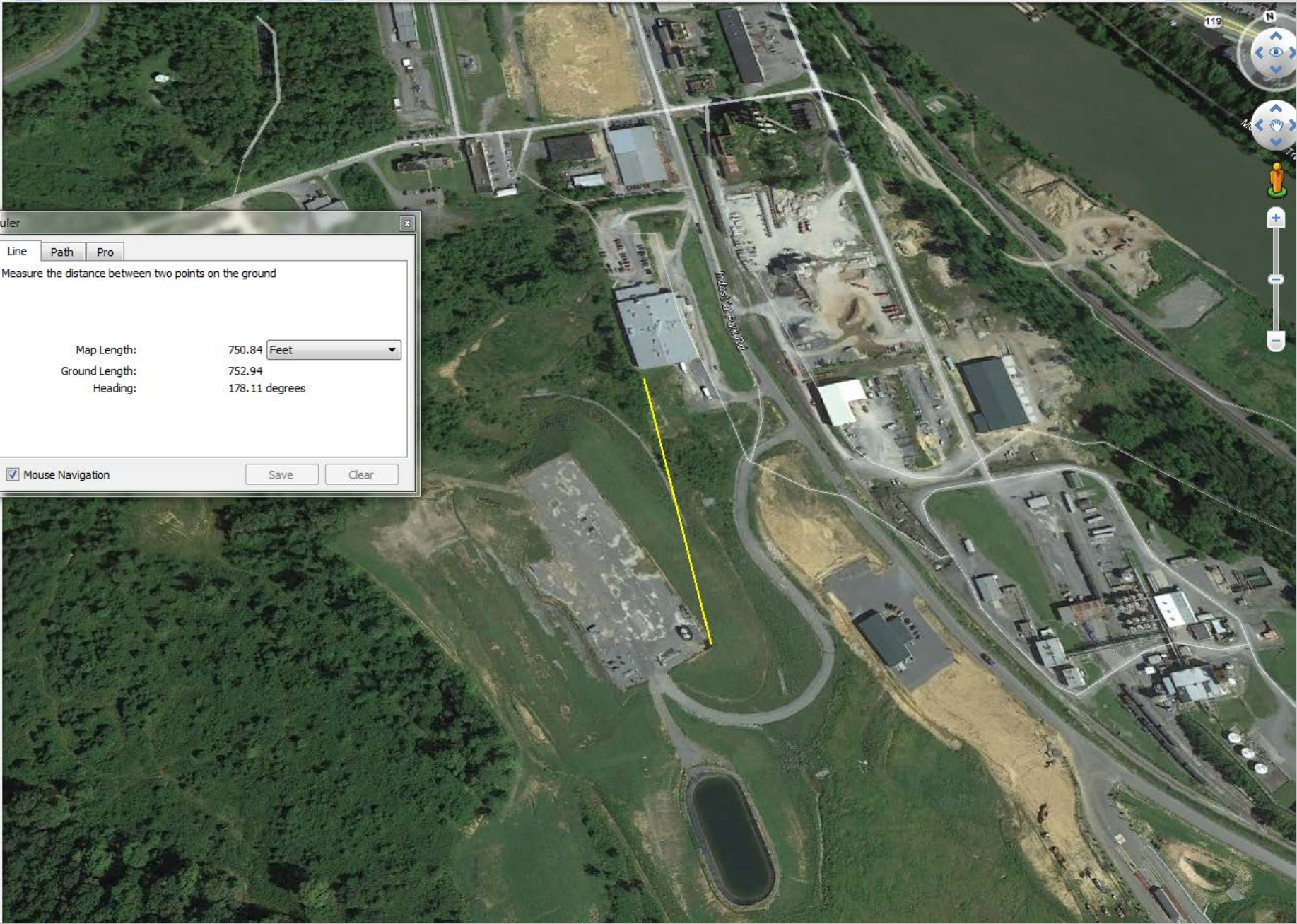
Ground Length: 752.94

Heading: 178.11 degrees

Mouse Navigation

Save Clear

ery >>





Ruler

Line Path Pro

Measure the distance between two points on the ground

Map Length:	857.64	Feet
Ground Length:	863.32	
Heading:	192.21	degrees

Mouse Navigation

Save Clear

119



Washburn Rd



